

**NEBRASKA CENTRAL
RAILROAD CO**

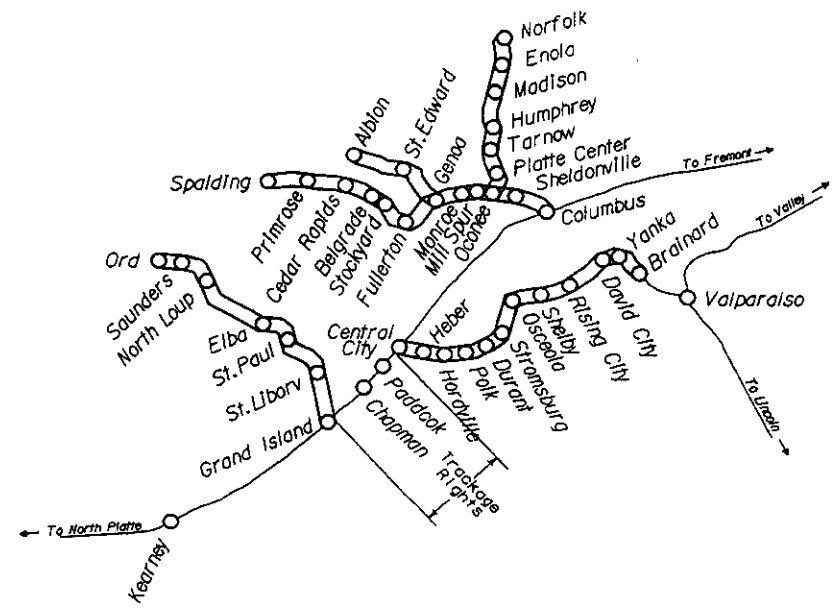
1701 South 13th St.

Norfolk, NE 68702

Phone: 402-371-9015

Fax: 402-844-3224

NEBRASKA CENTRAL RAILROAD COMPANY



LOCATION

NUCOR SPUR
 NORFOLK
 NORFOLK BRANCH
 ALBION BRANCH
 CEDAR RAPIDS BRANCH
 STROMSBURG BRANCH
 ORD BRANCH

NORFOLK
 NORFOLK
 NORFOLK TO COLUMBUS
 ALBION TO O'CONNOR
 SPALDING TO GENDA
 CENTRAL CITY TO BRAINARD
 ORD TO GRAND ISLAND

MP

0.00
 46.10
 48.60
 34.66
 44.59
 75.15
 61.28

MP

46.10
 43.44
 2.50
 0.10
 0.13
 12.00
 0.48

PAGES

1
 1
 2 TO 6
 7 TO 10
 11 TO 15
 16 TO 22
 23 TO 29

REVISED AS OF: JULY 3, 2000

JOK
 LESE
 (mpco)

NORCOK SPUR

NORFOLK

LAST REVISED
JUNE 28, 2000

MOBILE-TEL. STA.

NAME RANGE

M. P. LOCATION

M. P.

YARD LIMIT
DRAG, EQPT. DET.
HOT BOX DET.

INT. SIG. 8 NO.
ABSOLUTE SIG.
HIGH WIDE
SWIFTED LOAD DET.
TEMP. WIND GAGE
HIGH WATER DET.

TOPOGRAPHY

ELEV. TOP OF RAIL
AT STATION M.P.
CONTROL POINTS &
STATION NAMES
CIRCULAR 7 NUMBER
MILE POST LOCATION
LGTH (CLEAR) OF SIDING

MAX. GRADE PERCENT
(SUB GRADE)

SLIDE WARNING
EL. ABOVE SEA LEVEL

FIBER OPTICS

C. T. C. ---
A. B. S. ---
SPEED ALLOWANCE

AUTH. SUPER ELEV.

TOTAL ANGLE

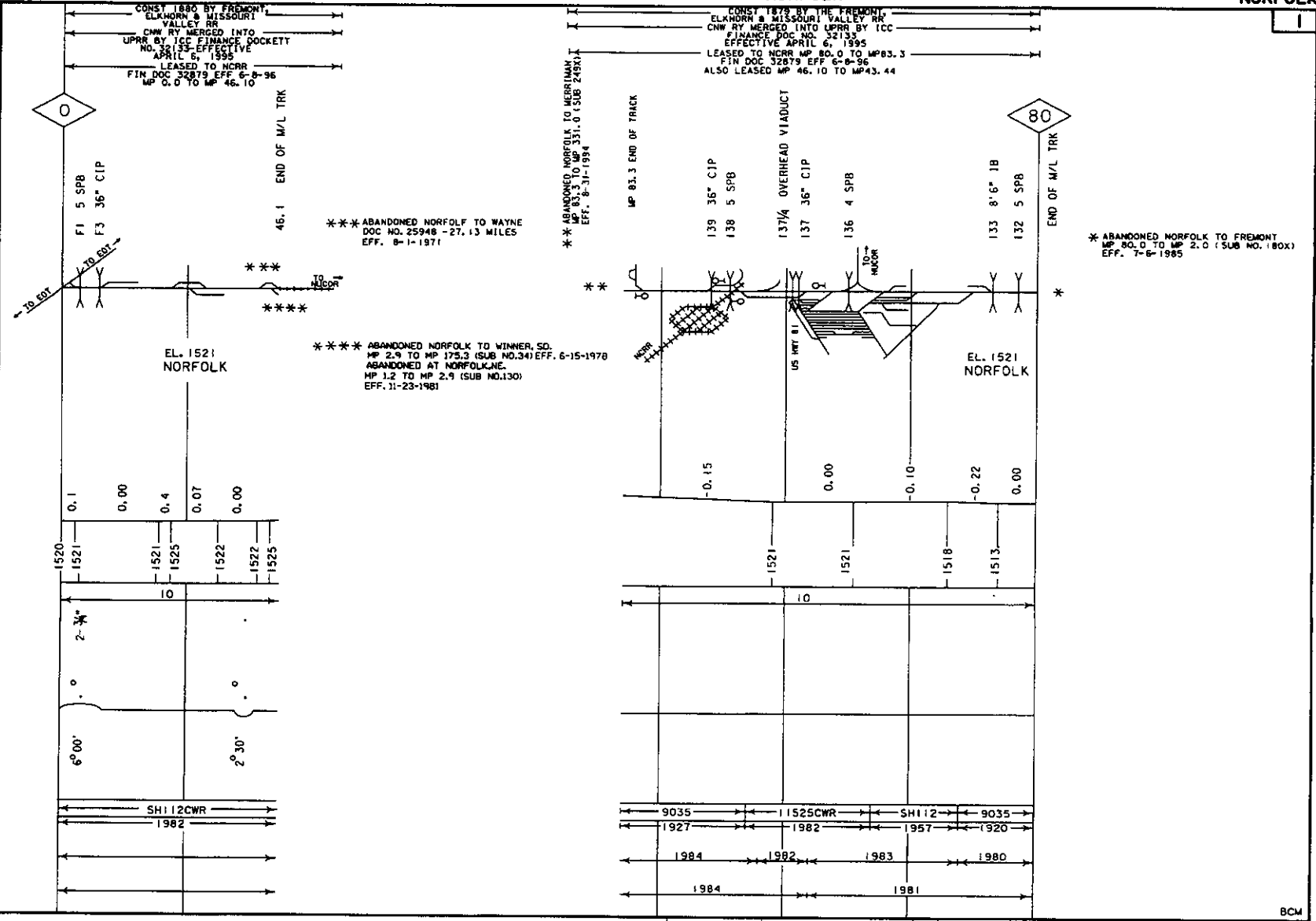
ALIGNMENT &
FLANGE LUBRICATORS

DEGREE OF CURVE

RAIL

SURFACING & LINING

TIE GANG



GRADE XING DATA

X - BUCK
B - BELL
F - FLASHER
G - GATES
W - WIDENING
T - TRAFFIC SIGNAL
S - STOP SIGN

BCM

**NEBRASKA CENTRAL RAILROAD
NORFOLK SUBDIVISION**

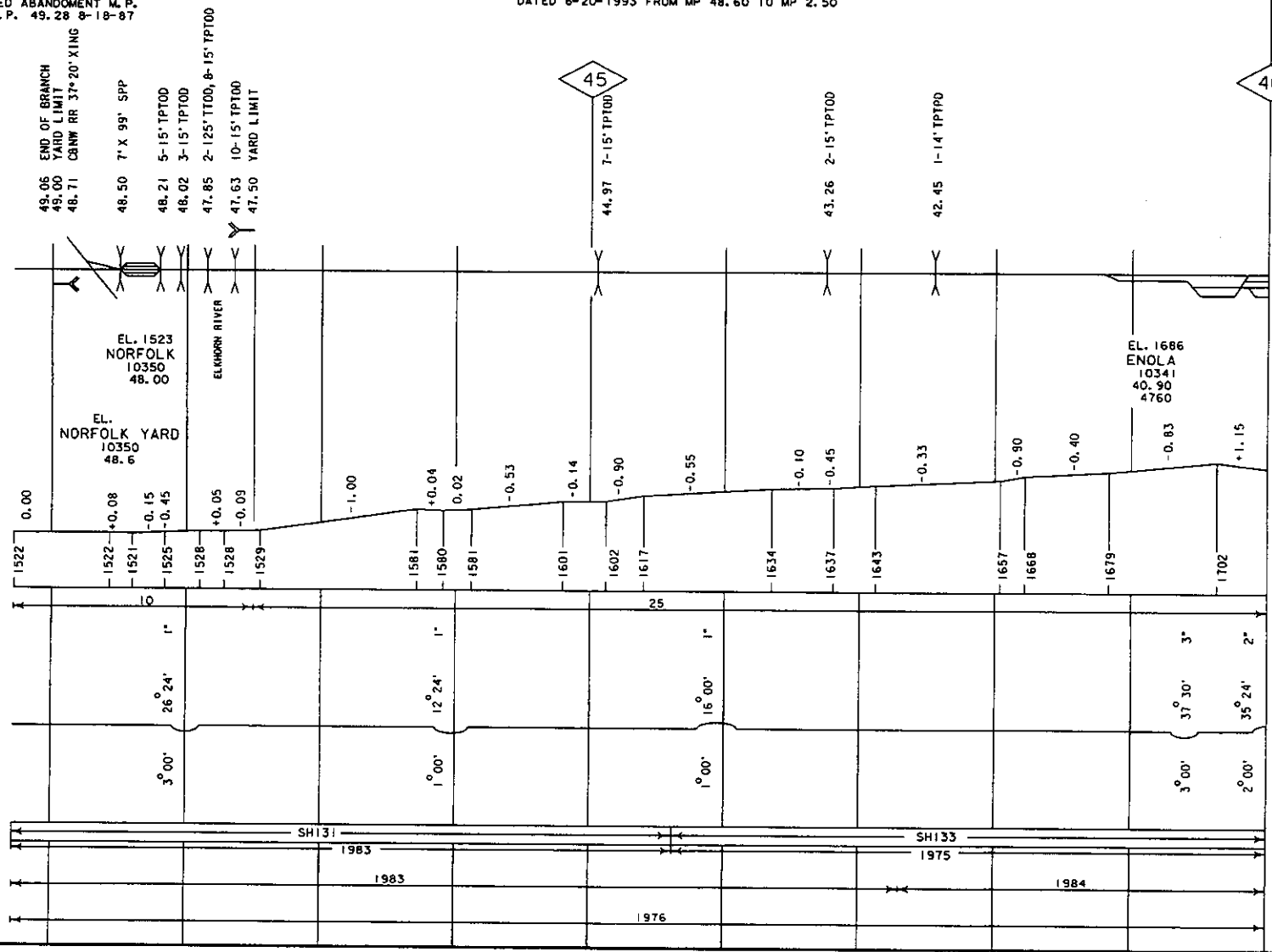
LAST REVISED
DECEMBER 22, 1998

CONSTRUCTED 1879 BY THE OMAHA, NIOBRARA & BLACK HILLS RR CO.
LEASED TO NEBRASKA CENTRAL RR PER AGREEMENT XXXXXX,
DATED 6-20-1993 FROM MP 48.60 TO MP 2.50

2

- MOBILE-TEL. STA.
- NAME RANGE
- M. P. M. P.
- M. P. LOCATION
- YARD LIMIT
- ORAG. EOPT. DET.
- HOT BOX DET.
- PWR. SW.
- SPR. SW.
- INT. SIG. B NO.
- ABSOLUTE SIG.
- HIGH WIDE
- SHIFTED LOAD DET.
- TEMP-WIND GAGE
- HIGH WATER DET.
- TOPOGRAPHY
- ELEV. TOP OF RAIL AT STATION M. P.
- CONTROL POINTS & STATION NAMES
- CIRCULAR T NUMBER
- MILE POST LOCATION
- LGTH (CLEAR) OF SIDING
- MAX. GRADE PERCENT (SUB GRADE)
- SLIDE WARNING
- EL. ABOVE SEA LEVEL
- FIBER OPTICS
- C. T. C. ---
- A. B. S. ---
- SPEED ALLOWANCE
- AUTH. SUPER ELEV.
- TOTAL ANGLE
- ALIGNMENT & FLANGE LUBRICATORS
- DEGREE OF CURVE
- RAIL
- SURFACING & LINING
- TIE GANG

ICC APPROVED ABANDONMENT M. P.
49.06 TO M. P. 49.28 & 18-87



40

GRADE XING DATA
X = X-BUCK
B = BELL
G = GATES

BCM

**NEBRASKA CENTRAL RAILROAD
NORFOLK SUBDIVISION**

LAST REVISED
JUNE 28, 2000

CONSTRUCTED 1879 OMAHA NIOBRARA & BLACK HILLS R. R. CO.
LEASED TO NEBRASKA CENTRAL RR PER AGREEMENT XXXXXX, DATED 6-20-1993 FROM MP 48.60 TO MP 2.50

3

MOBILE-TEL. STA.

NAME

RANGE

M. P. M. P.

M. P. LOCATION

YARD LIMIT
DRAG, EDPT. DET.
HOT BOX DET.

PWR. SW.
SPG. SW.
INT. SIG. B NO.
ABSOLUTE SIG.
HIGH WIDE
SHIFTED LOAD DET.
TEMP-WIND GAGE
HIGH WATER DET.

TOPOGRAPHY

ELEV. TOP OF RAIL
AT STATION M.P.
CONTROL POINTS &
STATION NAMES
CIRCULAR 7 NUMBER
MILE POST LOCATION
LGTH (CLEAR) OF SIDING

MAX. GRADE PERCENT
(SUB GRADE)

SLIDE WARNING
EL. ABOVE SEA LEVEL

FIBER OPTICS

C. T. C.

A. B. S.

SPEED ALLOWANCE

AUTH. SUPER ELEV.

TOTAL ANGLE

ALIGNMENT &
FLANGE LUBRICATORS

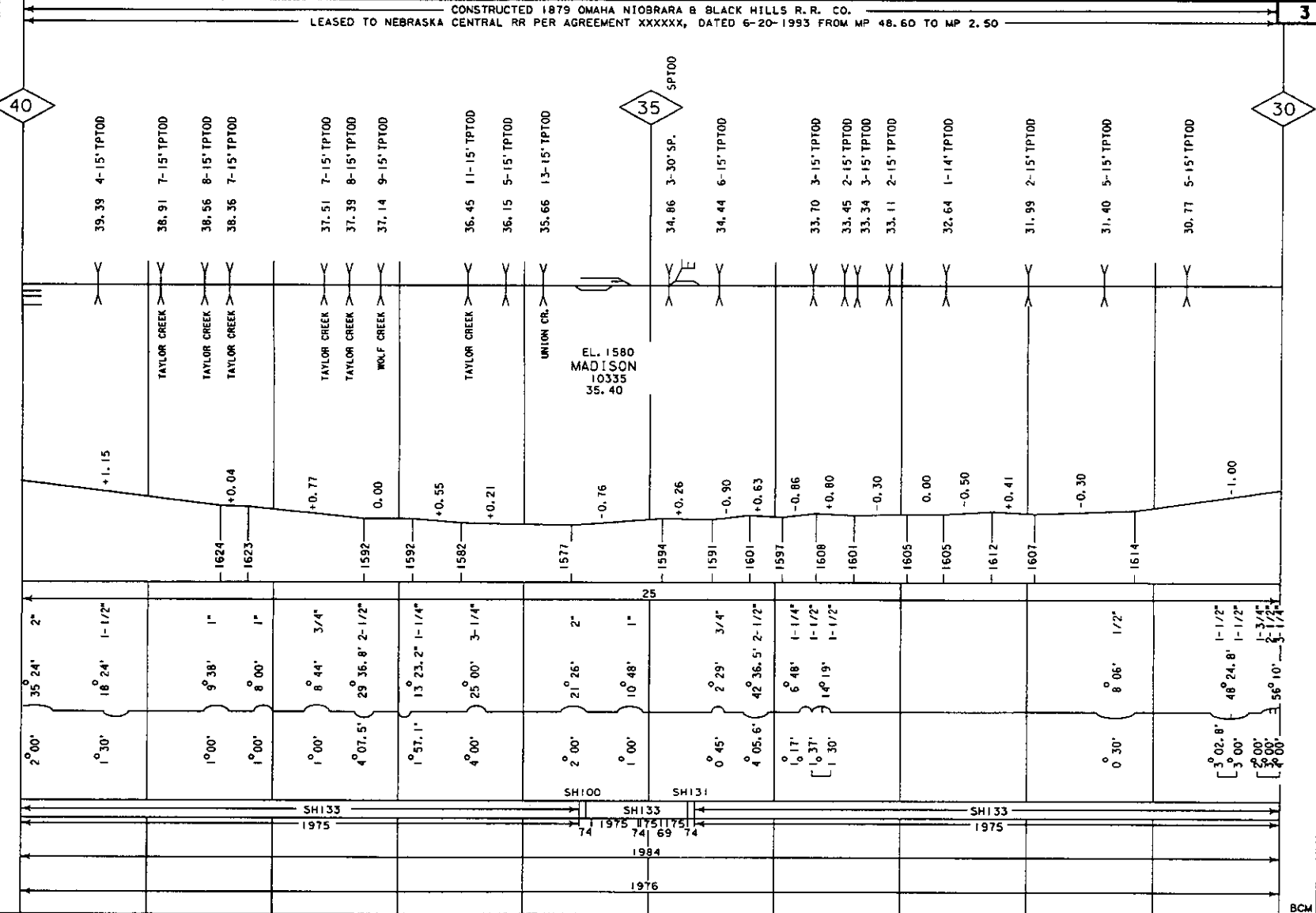
DEGREE OF CURVE

RAIL

SURFACING & LINING

TIE GANG

GRADE XING DATA
X = X-BLOCK
B = BELL
F = FLASHER
G = GATES



BCM

**NEBRASKA CENTRAL RAILROAD
NORFOLK SUBDIVISION**

LAST REVISED
JUNE 28, 2000

CONSTRUCTED 1879 OMAHA NIobrARA & BLACK HILLS R. R. CO.
LEASED TO NEBRASKA CENTRAL RR PER AGREEMENT XXXXXX, DATED 6-20-1993 FROM MP 48.60 TO MP 2.50

4

MOBILE-TEL. STA.

NAME RANGE

M. P. M. P.

M. P. LOCATION

30

25

20

YARD LIMIT
DRAG. EQPT. DET.
HOT BOX DET.
PWR. SW.
S.P.C. SW.
INT. SIG. B NO.
ABSOLUTE SIG.
HIGH WIDE
SHIFTED LOAD DET.
TEMP-WIND GAGE
HIGH WATER DET.

TOPOGRAPHY
ELEV. TOP OF RAIL
AT STATION M.P.
CONTROL POINTS &
STATION NAMES
CIRCULAR 7 NUMBER
MILE POST LOCATION
LGTH (CLEAR) OF SIDING

MAX. GRADE PERCENT
(SUB GRADE)

SLIDE WARNING
EL. ABOVE SEA LEVEL
FIBER OPTICS
C. T. C. ---
A. B. S. ---
SPEED ALLOWANCE

AUTH. SUPER ELEV.

TOTAL ANGLE

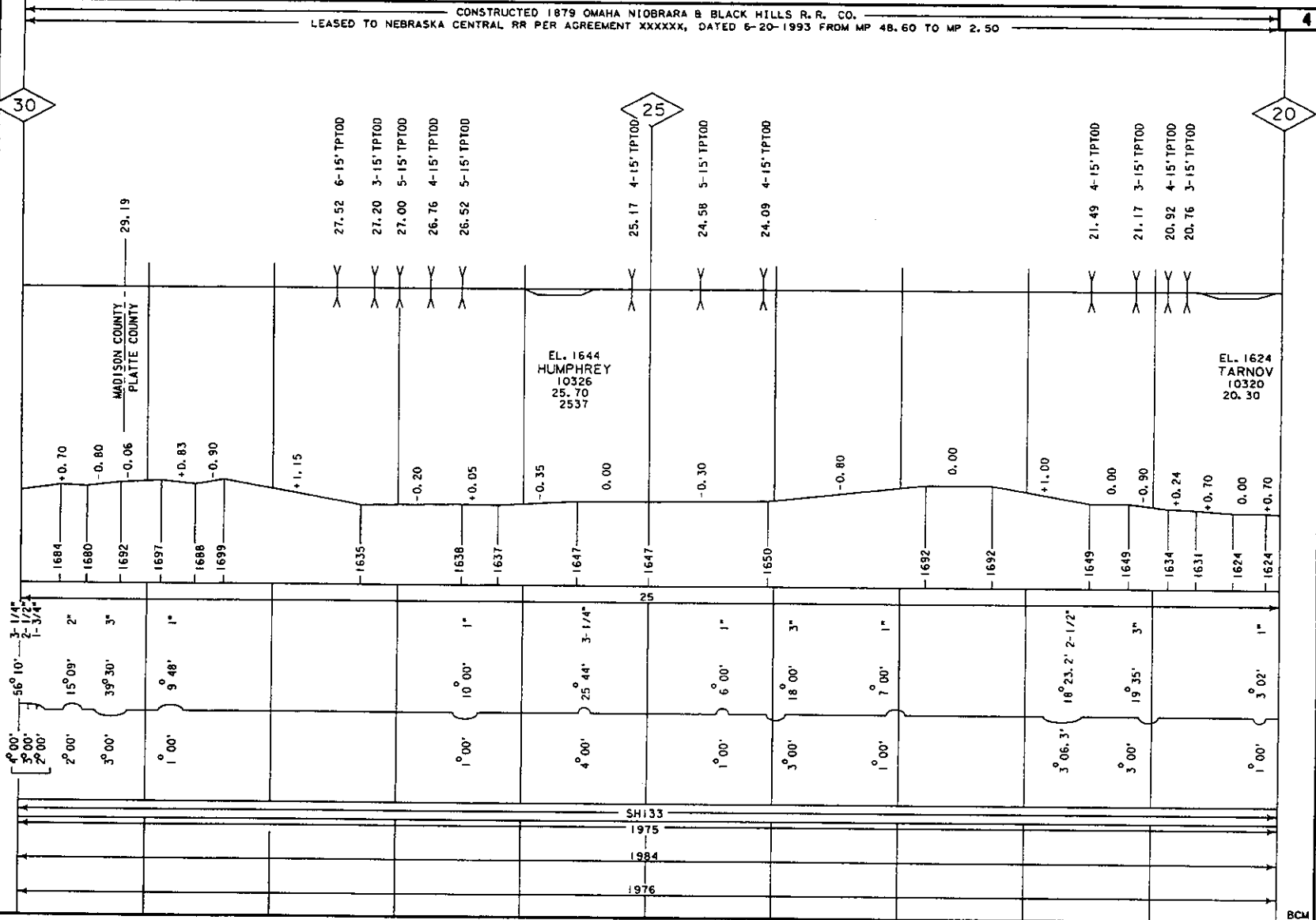
ALIGNMENT &
FLANGE LUBRICATORS

DEGREE OF CURVE

RAIL

SURFACING & LINING

TIE GANG



GRADE CROSSING DATA
X = X-BUCK
B = BELL
T = T-FLASKER
G = GATES

BCM

**NEBRASKA CENTRAL RAILROAD
NORFOLK SUBDIVISION**

**COUNCIL BLUFFS DIVISION
NORFOLK BRANCH**

LAST REVISED
JUNE 28, 2000

CONSTRUCTED 1879 OMAHA NIOBRARA & BLACK HILLS R.R. CO.
LEASED TO NEBRASKA CENTRAL RR PER AGREEMENT XXXXXX, DATED 6-20-1993 FROM MP 48.60 TO MP 2.50

5

MOBILE-TEL. STA.

NAME
RANGE

M.P. M.P.

M.P. LOCATION

YARD LIMIT
DRAG. EOPT. DET.
HOT BOX DET.

PWR. SW.
S.P.C. SW.
INT. SIG. & NO.
ABSOLUTE SIG.
HIGH WIDE
SHIFTED LOAD DET.
TEMP-WIND GAGE
HIGH WATER DET.

TOPOGRAPHY

ELEV. TOP OF RAIL
AT STATION M.P.
CONTROL POINTS &
STATION NAMES
CIRCULAR 7 NUMBER
MILE POST LOCATION
LGTH (CLEAR) OF SIDING

MAX. GRADE PERCENT
(SUB GRADE)

SLIDE WARNING
EL. ABOVE SEA LEVEL
FIBER OPTICS

C. T. C.
A. B. S.
SPEED ALLOWANCE

AUTH. SUPER ELEV.

TOTAL ANGLE

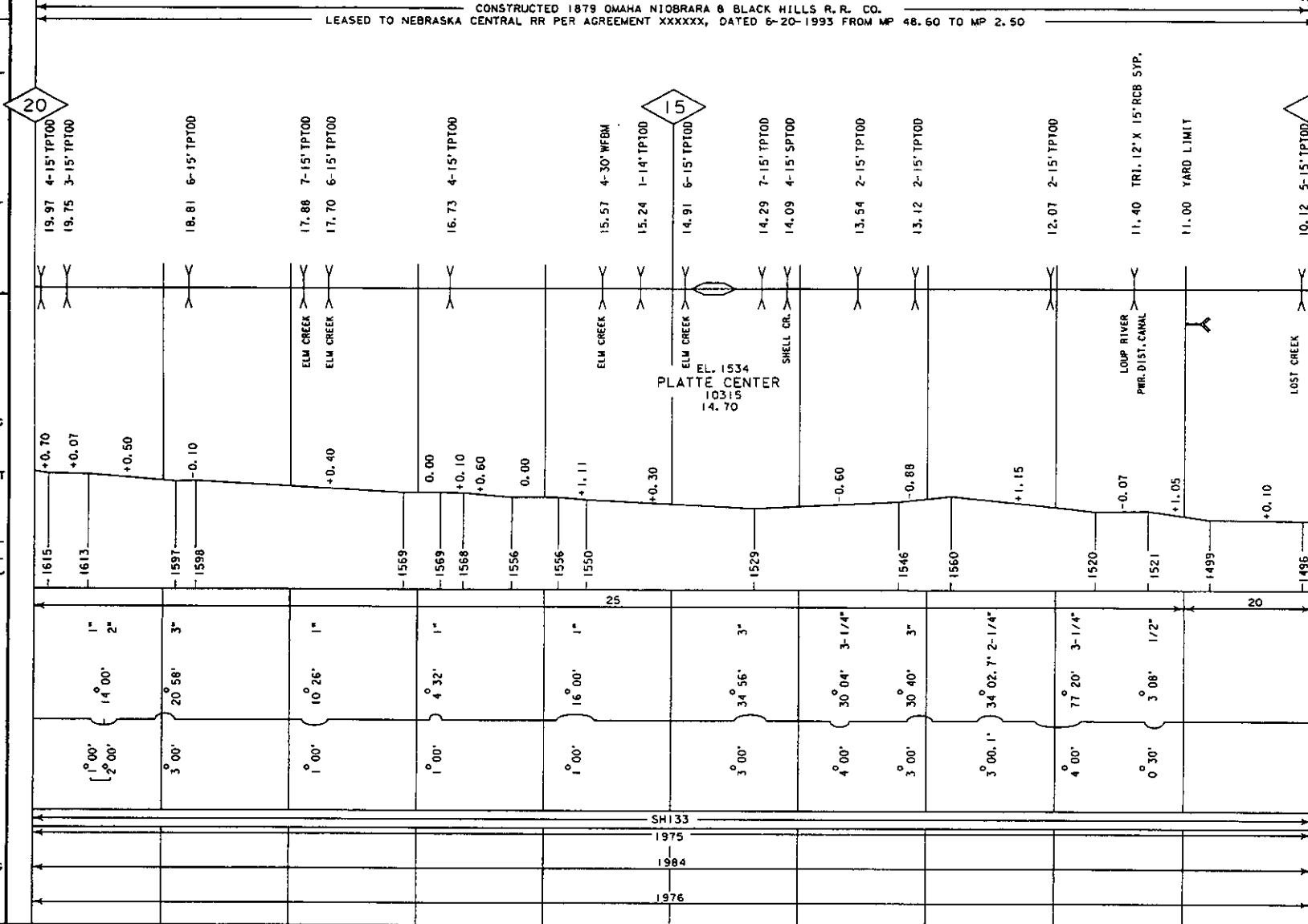
ALIGNMENT &
FLANGE LUBRICATORS

DEGREE OF CURVE

RAIL

SURFACING & LINING

TIE GANG



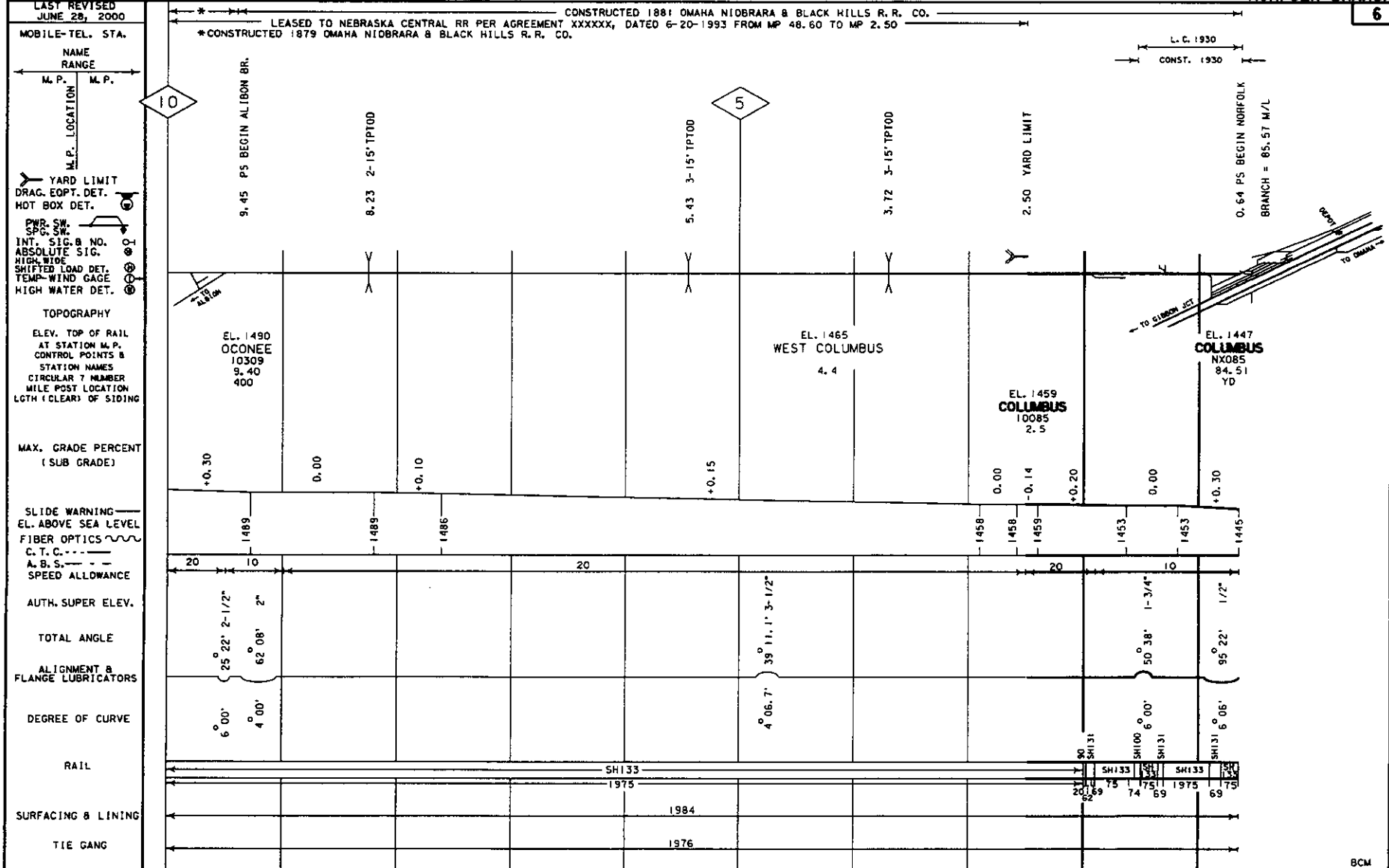
GRADE XING DATA
X = X-BUCK
B = BELL
F = FLASHER
G = GATES

8CM

**NEBRASKA CENTRAL RAILROAD
NORFOLK SUBDIVISION**

**COUNCIL BLUFFS DIVISION
NORFOLK BRANCH**

6



GRADE XING DATA
 X = X-BUCK
 B = BELL
 F = FLASHER
 G = GATES

BCM

**NEBRASKA CENTRAL RAILROAD
ALBION SUBDIVISION**

LAST REVISED
JUNE 29, 2000

MOBILE-TEL. STA.

NAME
RANGE

M. P. M. P.

M. P. LOCATION

YARD LIMIT

DRAG. EQPT. DET.

HOT BOX DET.

PWR. SW.

SPG. SW.

INT. SIG. & NO.

ABSOLUTE SIG.

HIGH WIDE

SHIFTED LOAD DET.

TEMP-WIND GAGE

HIGH WATER DET.

TOPOGRAPHY

ELEV. TOP OF RAIL
AT STATION M. P.
CONTROL POINTS &
STATION NAMES
CIRCULAR 7 NUMBER
MILE POST LOCATION
LGTH (CLEAR) OF SIDING

MAX. GRADE PERCENT
(SUB GRADE)

SLIDE WARNING
EL. ABOVE SEA LEVEL

FIBER OPTICS

C. T. C.

A. B. S.

SPEED ALLOWANCE

AUTH. SUPER ELEV.

TOTAL ANGLE

ALIGNMENT &
FLANGE LUBRICATORS

DEGREE OF CURVE

RAIL

SURFACING & LINING

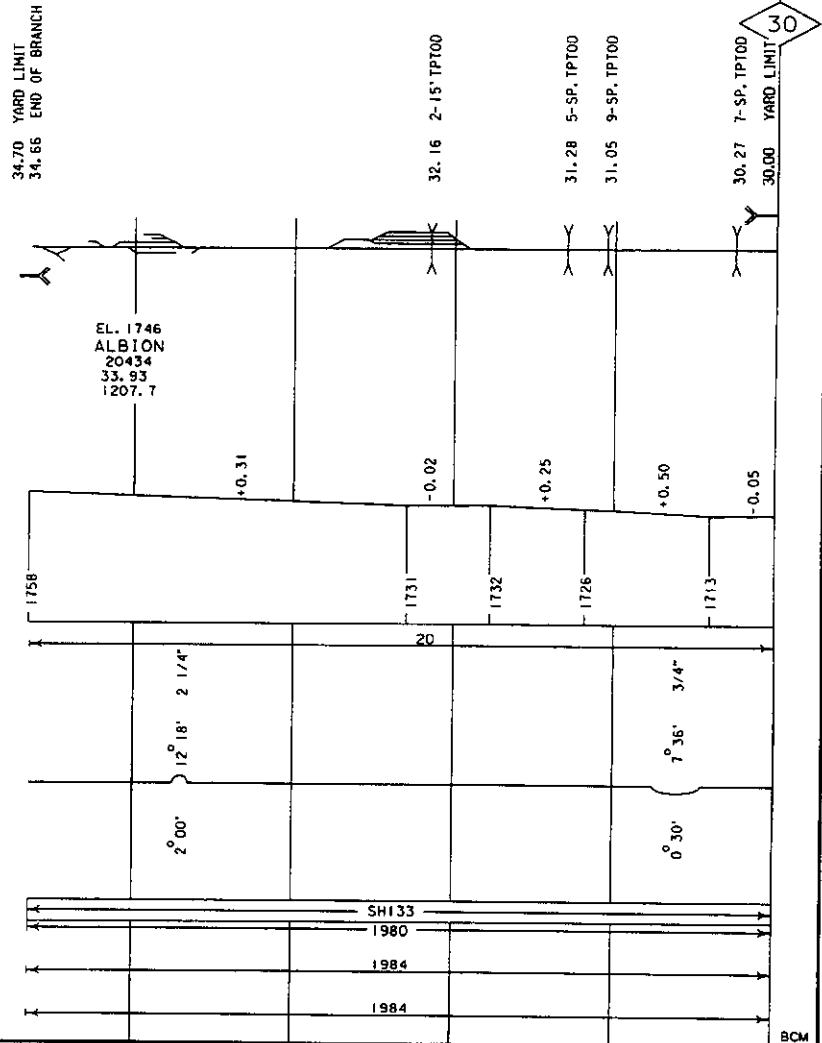
TIE GANG

GRADE XING DATA

X = X-BUCK
B = BELL
F = FLASHER
G = GATES

CONSTRUCTED 1879 BY THE OMAHA, NIobrARA & BLACK HILLS RR CO.
LEASED TO NEBRASKA CENTRAL RR PER AGREEMENT XXXXXX,
DATED 6-23-1993 FROM MP 34.66 TO MP 0.10

7



**NEBRASKA CENTRAL RAILROAD
ALBION SUBDIVISION**

LAST REVISED
JUNE 29, 2000

MOBILE-TEL. STA.
NAME RANGE
M. P. M. P.

M. P. LOCATION

YARD LIMIT
DRAG. EDPT. DET.
HOT BOX DET.

PWR. SW.
SPG. SW.
INT. SIG. B. NO.
ABSOLUTE SIG.
HIGH WIDE
SHIFTED LOAD DET.
TEMP. WIND GAGE
HIGH WATER DET.

TOPOGRAPHY
ELEV. TOP OF RAIL
AT STATION M.P.
CONTROL POINTS &
STATION NAMES
CIRCULAR T NUMBER
MILE POST LOCATION
LGTH (CLEAR) OF SIDING

MAX. GRADE PERCENT
(SUB GRADE)

SLIDE WARNING
EL. ABOVE SEA LEVEL
FIBER OPTICS
C. T. C. ---
A. B. S. ---
SPEED ALLOWANCE

AUTH. SUPER ELEV.

TOTAL ANGLE

ALIGNMENT &
FLANGE LUBRICATORS

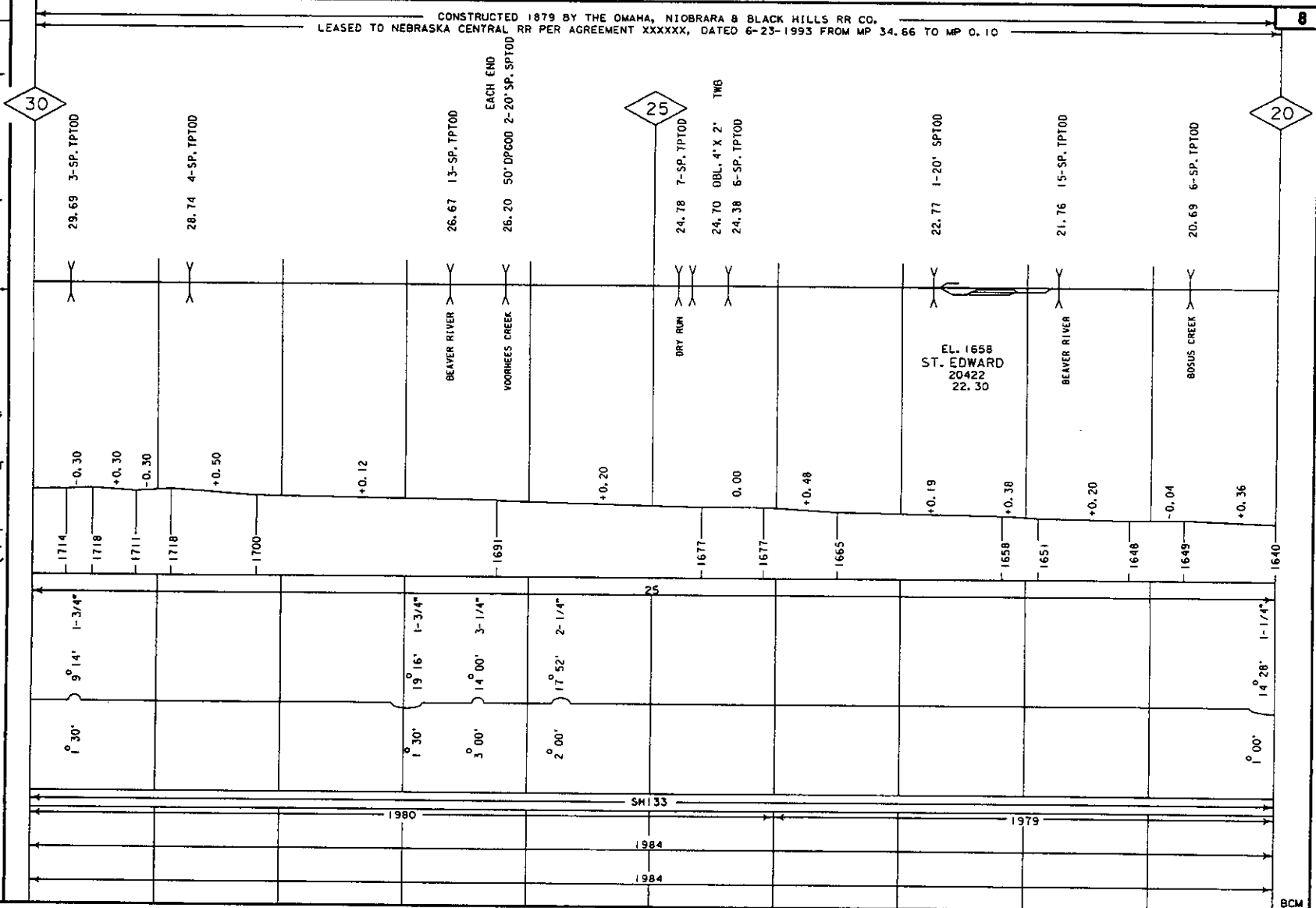
DEGREE OF CURVE

RAIL

SURFACING & LINING

TIE GANG

CONSTRUCTED 1879 BY THE OMAHA, NIORARA & BLACK HILLS RR CO.
LEASED TO NEBRASKA CENTRAL RR PER AGREEMENT XXXXXX, DATED 6-23-1993 FROM MP 34.66 TO MP 0.10



GRADE XING DATA
X = X-BUCK
B = BELL
H = HORN
C = CLASHER
G = GATES

8

30

25

20

EL. 1658
ST. EDWARD
20422
22.30

BCM

**NEBRASKA CENTRAL RAILROAD
ALBION SUBDIVISION**

LAST REVISED
JUNE 29, 2000

CONSTRUCTED 1873 BY THE OMAHA, NIobrARA & BLACK HILLS RR CO.
LEASED TO NEBRASKA CENTRAL RR PER AGREEMENT XXXXXX, DATED 6-23-1993, FROM MP 34.66 TO MP 0.10

10

MOBILE-TEL. STA.

NAME RANGE

M. P. M. P.

M. P. LOCATION

YARD LIMIT

DRAG. EQPT. DET.

HOT BOX DET.

PWR. SW. SPC. SW.

INT. SIG. & NO.

ABSOLUTE SIG.

HIGH WIDE

SHIFTED LOAD DET.

TEMP-WIND GAGE

HIGH WATER DET.

TOPOGRAPHY

ELEV. TOP OF RAIL

AT STATION M. P.

CONTROL POINTS &

STATION NAMES

CIRCULAR 7 NUMBER

MILE POST LOCATION

LGTH (CLEAR) OF SIDING

MAX. GRADE PERCENT (SUB GRADE)

SLIDE WARNING

EL. ABOVE SEA LEVEL

FIBER OPTICS

C. T. C. ---

A. B. S. ---

SPEED ALLOWANCE

AUTH. SUPER ELEV.

TOTAL ANGLE

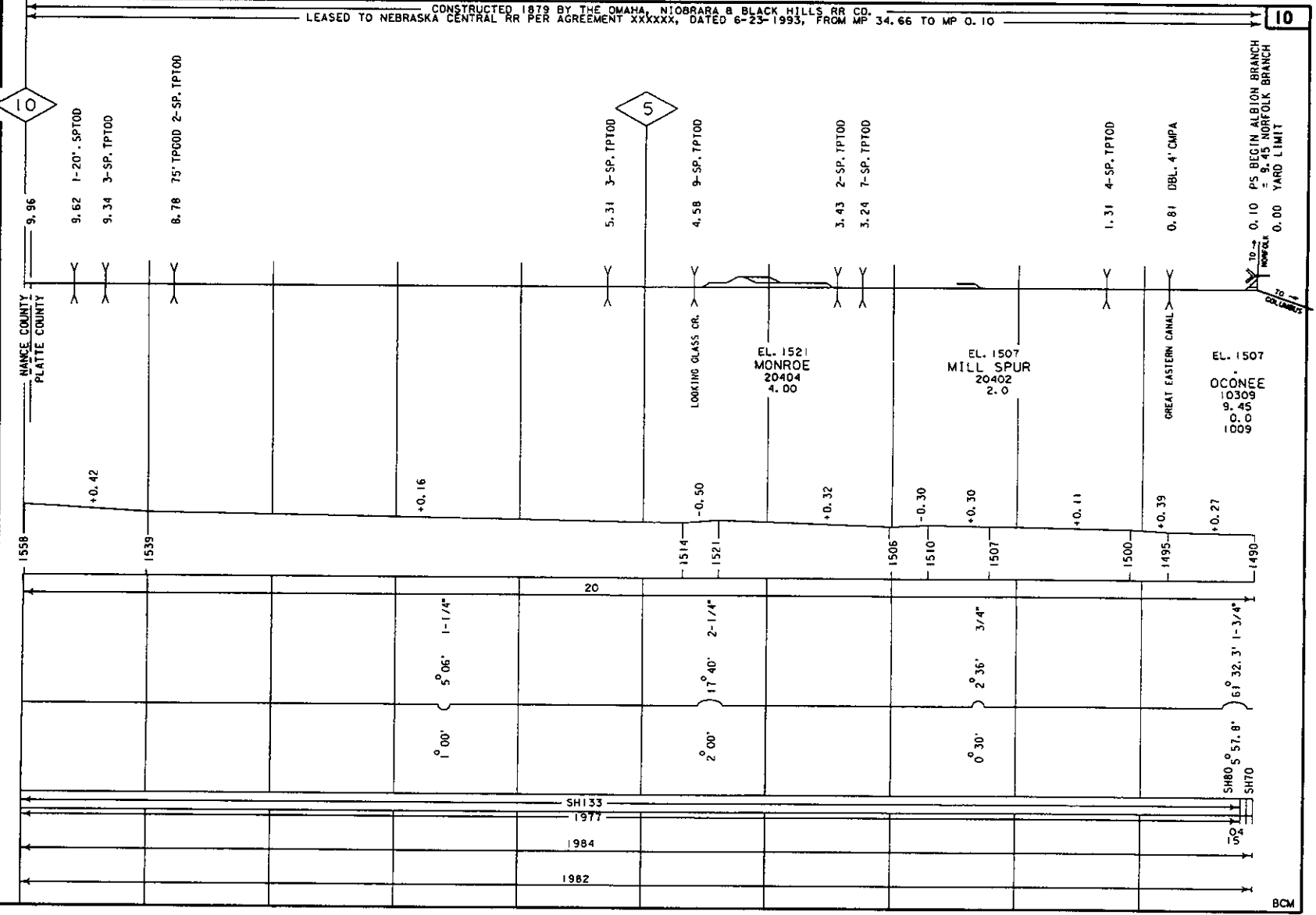
ALIGNMENT & FLANGE LUBRICATORS

DEGREE OF CURVE

RAIL

SURFACING & LINING

TIE GANG



TO COLIARUS

TO COLIARUS

PS BEGIN ALBION BRANCH = 9.45

NORFOLK 0.00 YARD LIMIT

GRADE XING DATA

O T B X H

H B U C K

B E L L

F L A S H E R

G A T E S

BCM

**NEBRASKA CENTRAL RAILROAD
CEDAR RAPIDS SUBDIVISION**

LAST REVISED
JUNE 29, 2000

MOBILE-TEL. STA.

NAME
RANGE

M. P. M. P.

M. P. LOCATION

YARD LIMIT
DRAG, EDPT. DET.
HOT BOX DET.

PWR. SW.
SPR. SW.
INT. SIG. & NO.
ABSOLUTE SIG.
HIGH WIDE
SHIFTED LOAD DET.
TEMP-WIND GAGE
HIGH WATER DET.

TOPOGRAPHY

ELEV. TOP OF RAIL
AT STATION M.P.
CONTROL POINTS &
STATION NAMES
CIRCULAR T NUMBER
MILE POST LOCATION
LGTH (CLEAR) OF SIDING

MAX. GRADE PERCENT
(SUB GRADE)

SLIDE WARNING
EL. ABOVE SEA LEVEL
FIBER OPTICS
C. T. C.
A. B. S.
SPEED ALLOWANCE

AUTH. SUPER ELEV.

TOTAL ANGLE

ALIGNMENT &
FLANGE LUBRICATORS

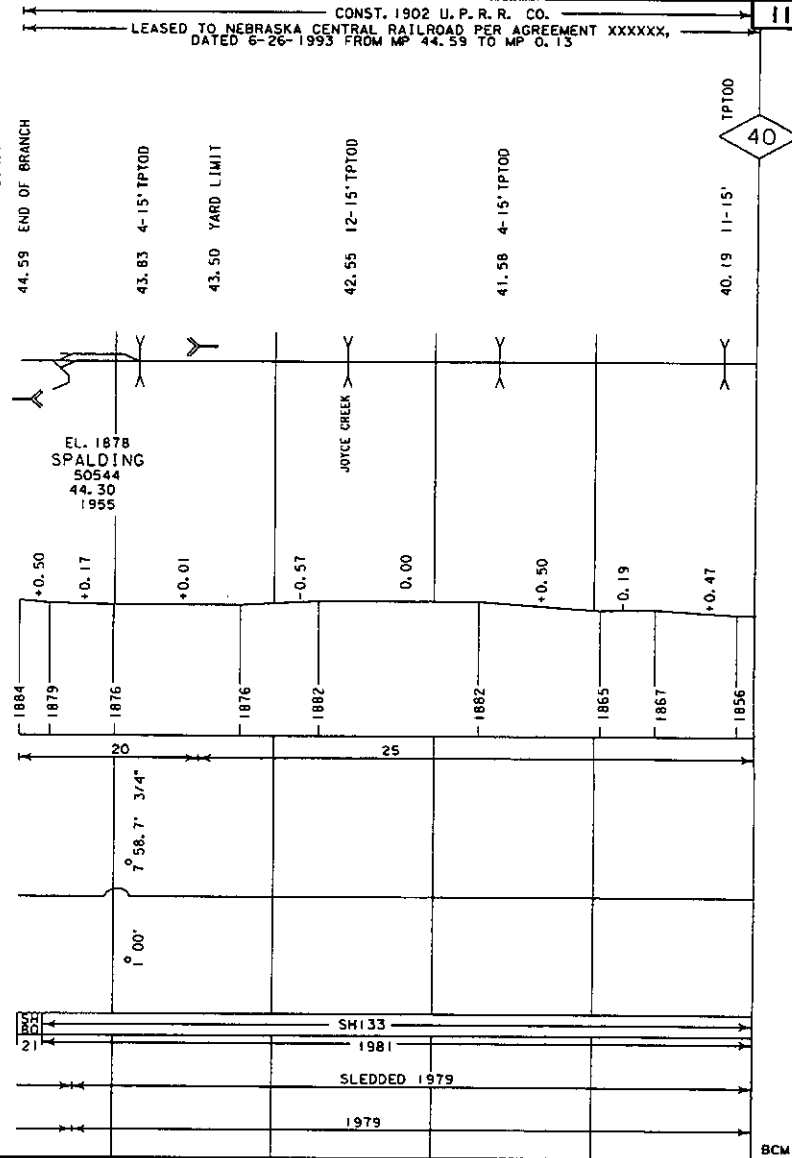
DEGREE OF CURVE

RAIL

SURFACING & LINING

TIE GANG

GRADE KING DATA
X-BUCK
BELL
FLASHER
GATES
WTC WAG
TRAFFIC SIGNAL
STOP SIGN
CANTILEVER



**NEBRASKA CENTRAL RAILROAD
CEDAR RAPIDS SUBDIVISION**

LAST REVISED
JUNE 29, 2000

CONST. 1902 U.P. R.R. CO.
LEASED TO NEBRASKA CENTRAL RAILROAD PER AGREEMENT XXXXXX, DATED 6-26-1993 FROM MP 44.59 TO MP 0.13

* CONST. 1883-1884 OMAHA NIobrARA & BLACK HILLS R.R. CO.

12

MOBILE-TEL. STA.

NAME
RANGE

M. P. M. P.

M. P. LOCATION

YARD LIMIT
DRAG. EOPT. DET.
HOT BOX DET.

PWR. SW.
SPG. SW.
INT. SIG. & NO.
ABSOLUTE SIG.
HIGH WIDE
SHIFTED LOAD DET.
TEMP-WIND GAGE
HIGH WATER DET.

TOPOGRAPHY

ELEV. TOP OF RAIL
AT STATION M.P.
CONTROL POINTS &
STATION NAMES
CIRCULAR 7 NUMBER
MILE POST LOCATION
LGTH (CLEAR) OF SIDING

MAX. GRADE PERCENT
(SUB GRADE)

SLIDE WARNING
EL. ABOVE SEA LEVEL
FIBER OPTICS
C. T. C.
A. B. S.
SPEED ALLOWANCE

AUTH. SUPER ELEV.

TOTAL ANGLE

ALIGNMENT &
FLANGE LUBRICATORS

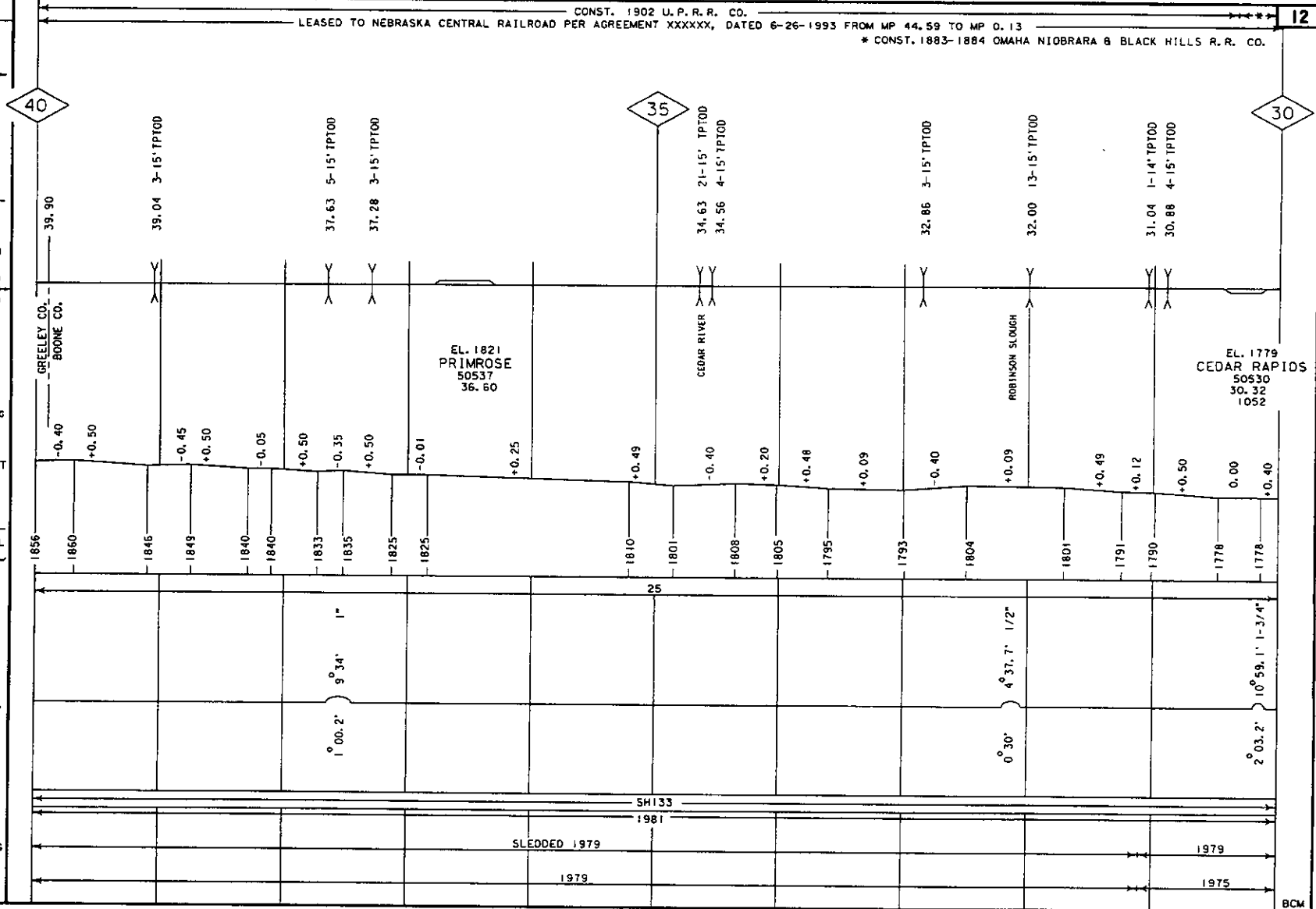
DEGREE OF CURVE

RAIL

SURFACING & LINING

TIE GANG

GRADE XING DATA
X-BUCK
BELL
CUSHNER
GATES
WIG WAG
TRAFFIC SIGNAL
STOP SIGN
CANTILEVER



BCM

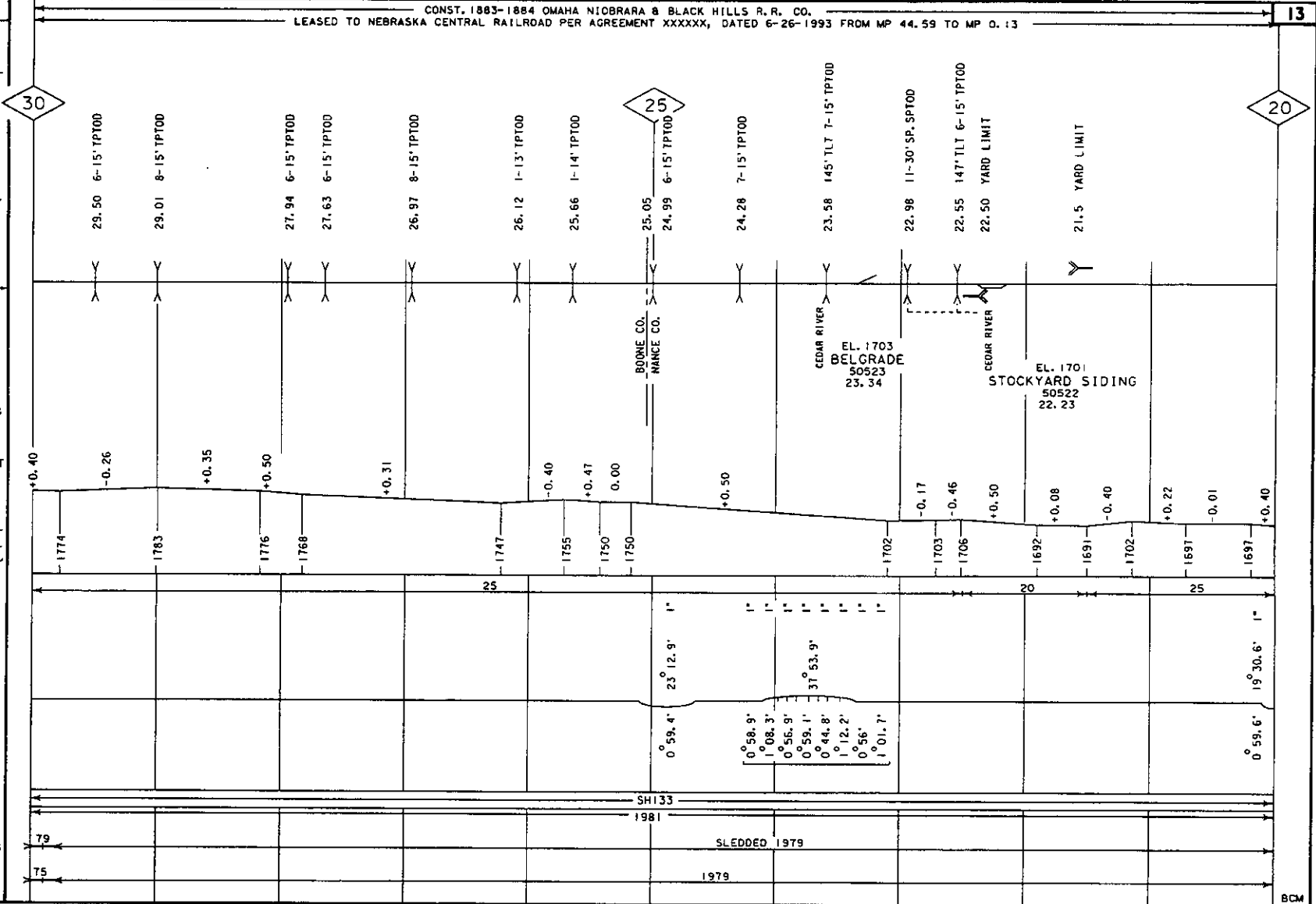
**NEBRASKA CENTRAL RAILROAD
CEDAR RAPIDS SUBDIVISION**

LAST REVISED
JUNE 29, 2000

CONST. 1883-1884 OMAHA NEBRARA & BLACK HILLS R. R. CO.
LEASED TO NEBRASKA CENTRAL RAILROAD PER AGREEMENT XXXXXX, DATED 6-26-1993 FROM MP 44.59 TO MP 0.13

13

- MOBILE-TEL. STA.
- NAME RANGE
- M. P. M. P.
- M.P. LOCATION
- YARD LIMIT
- DRAG, EOPT. DET.
- HOT BOX DET.
- PWR. SW.
- SPC. SW.
- INT. SIG. & NO.
- ABSOLUTE SIG.
- HIGH WIDE
- SHIFTED LOAD DET.
- TEMP-WIND GAGE
- HIGH WATER DET.
- TOPOGRAPHY
- ELEV. TOP OF RAIL AT STATION M.P.
- CONTROL POINTS & STATION NAMES
- CIRCULAR 7 NUMBER
- MILE POST LOCATION
- LGTH (CLEAR) OF SIDING
- MAX. GRADE PERCENT (SUB GRADE)
- SLIDE WARNING
- EL. ABOVE SEA LEVEL
- FIBER OPTICS
- C. T. C.
- A. B. S.
- SPEED ALLOWANCE
- AUTH. SUPER ELEV.
- TOTAL ANGLE
- ALIGNMENT & FLANGE LUBRICATORS
- DEGREE OF CURVE
- RAIL
- SURFACING & LINING
- TIE GANG



20

- GRADE XING DATA
- X-BUCK
- BELL
- FLASHER
- GATES
- WIG WAG
- TRAFFIC SIGNAL
- STOP SIGN
- CANTILEVER

BCM

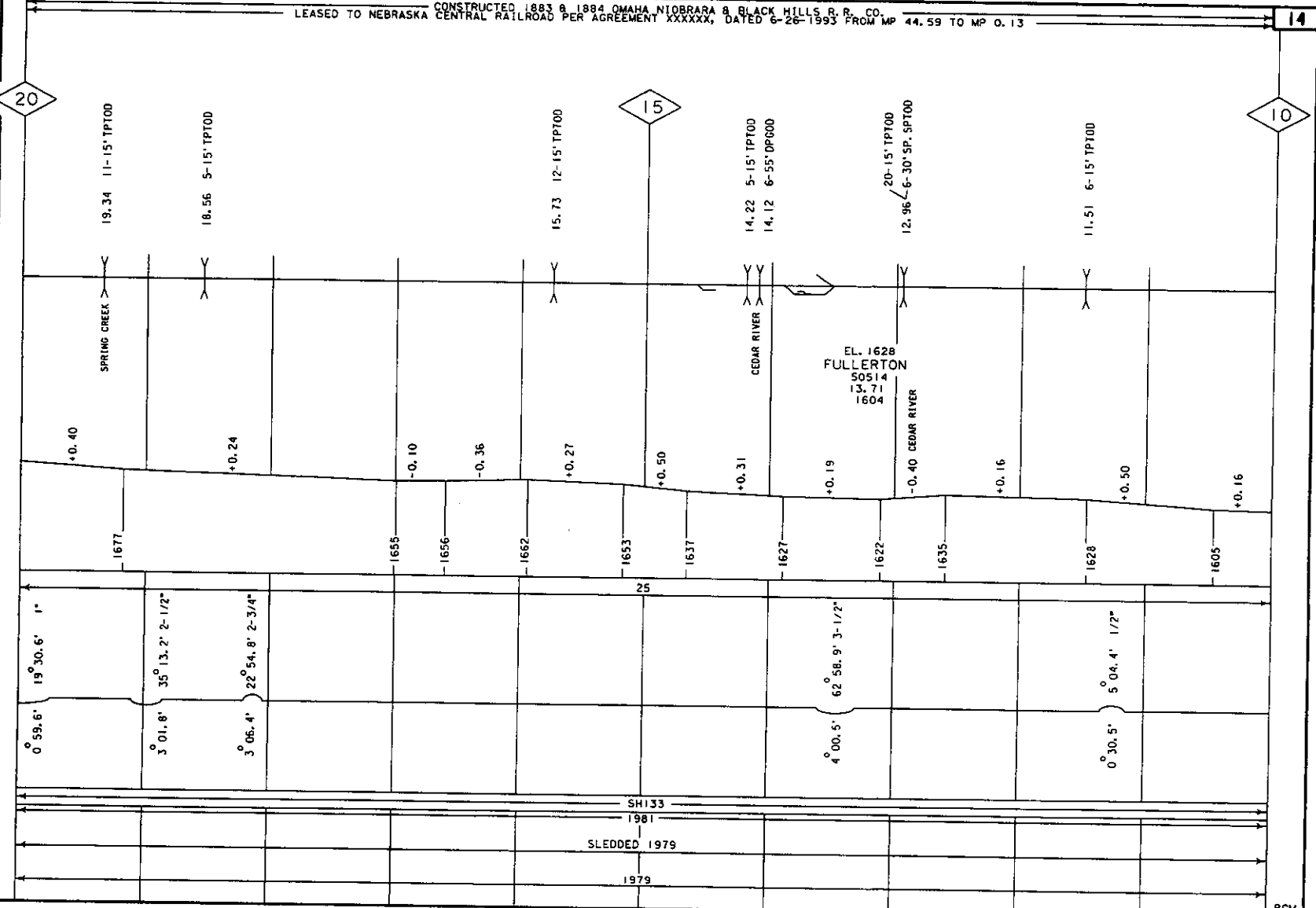
**NEBRASKA CENTRAL RAILROAD
CEDAR RAPIDS SUBDIVISION**

LAST REVISED
JUNE 29, 2000

CONSTRUCTED 1883 & 1884 OMAHA, NIobrARA & BLACK HILLS R. R. CO.
LEASED TO NEBRASKA CENTRAL RAILROAD PER AGREEMENT XXXXXX, DATED 6-26-1993 FROM MP 44.59 TO MP 0.13

14

MOBILE-TEL. STA.	
NAME RANGE	
M. P.	M. P.
M. P. LOCATION	
YARD LIMIT	
DRAG. EQPT. DET.	
HOT BOX DET.	
PWR. SW. SFC. SW.	
INT. SIG. & NO.	
ABSOLUTE SIG.	
HIGH WIDE	
SHIFTED LOAD DET.	
TEMP-WIND GAGE	
HIGH WATER DET.	
TOPOGRAPHY	
ELEV. TOP OF RAIL AT STATION M.P.	
CONTROL POINTS & STATION NAMES	
CIRCULAR T NUMBER	
MILE POST LOCATION	
LGTH (CLEAR) OF SIDING	
MAX. GRADE PERCENT (SUB GRADE)	
SLIDE WARNING	
EL. ABOVE SEA LEVEL	
FIBER OPTICS	
C. T. C. ---	
A. B. S. ---	
SPEED ALLOWANCE	
AUTH. SUPER ELEV.	
TOTAL ANGLE	
ALIGNMENT & FLANGE LUBRICATORS	
DEGREE OF CURVE	
RAIL	
SURFACING & LINING	
TIE GANG	



GRADE XING DATA	
BUCK	
BELL	
FLASHER	
GATES	
W/O WAG	
TRAFFIC SIGNAL	
STOP SIGN	
CANTILEVER	

**NEBRASKA CENTRAL RAILROAD
CEDAR RAPIDS SUBDIVISION**

LAST REVISED
JUNE 29, 2000

CONSTRUCTED 1883 & 1884 OMAHA, NIORRARA & BLACK HILLS R. R. CO.
LEASED TO NEBRASKA CENTRAL RAILROAD PER AGREEMENT XXXXXX, DATED 6-26-1993 FROM MP 44.59 TO MP 0.13

15

MOBILE-TEL. STA.

NAME RANGE

M. P. M. P.

M.P. LOCATION

YARD LIMIT
DRAG. EDPT. DET.
HOT BOX DET.

PWR SW.
SPG. SW.

INT. SIG. & NO.
ABSOLUTE SIG.
HIGH WIDE
SHIFTED LOAD DET.
TEMP. WIND GAGE
HIGH WATER DET.

TOPOGRAPHY

ELEV. TOP OF RAIL
AT STATION M. P.
CONTROL POINTS &
STATION NAMES
CIRCULAR 7 NUMBER
MILE POST LOCATION
LGTH (CLEAR) OF SIDING

MAX. GRADE PERCENT
(SUB GRADE)

SLIDE WARNING
EL. ABOVE SEA LEVEL
FIBER OPTICS

C. T. C. ---
A. B. S. ---
SPEED ALLOWANCE

AUTH. SUPER ELEV.

TOTAL ANGLE

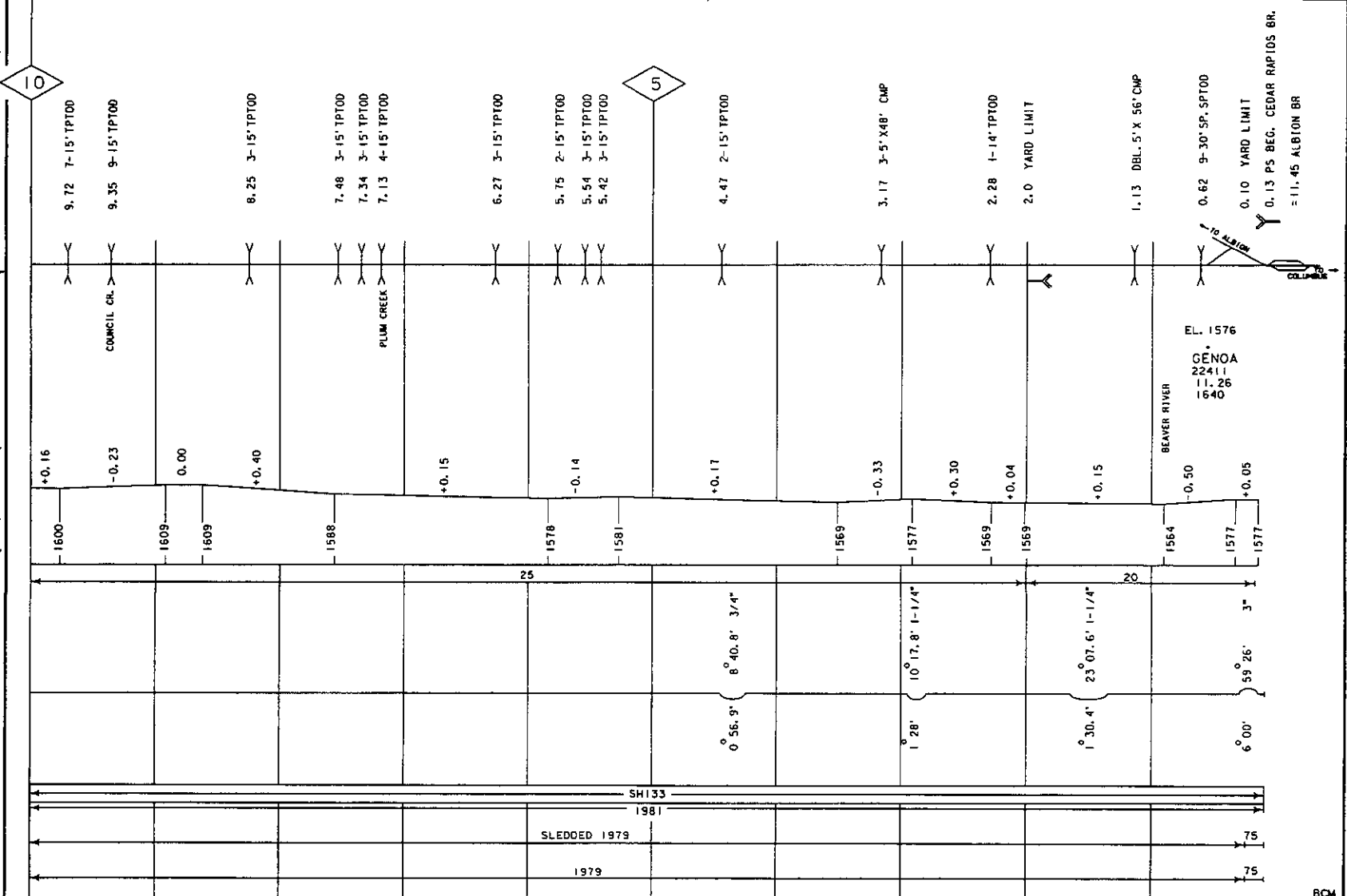
ALIGNMENT &
FLANGE LUBRICATORS

DEGREE OF CURVE

RAIL

SURFACING & LINING

TIE GANG



GRADE XING DATA

X-BUCK

BELL

FLASHER

GATES

WIG WAG

TRAFFIC SIGNAL

STOP SIGN

CANTILEVER

BCM

**NEBRASKA CENTRAL RAILROAD
STROMSBURG SUBDIVISION**

LAST REVISED
JULY 6, 2000

MOBILE-TEL. STA.

NAME RANGE

M. P. M. P.

M. P. LOCATION

YARD LIMIT

DRAG. EOPT. DET.

HOT BOX DET.

PWR. SW. SPC. SW.

INT. SIG. & NO.

ABSOLUTE SIG.

HIGH WIDE

SHIFTED LOAD DET.

TEMP. WIND GAGE

HIGH WATER DET.

TOPOGRAPHY

ELEV. TOP OF RAIL

AT STATION M. P.

CONTROL POINTS &

STATION NAMES

CIRCULAR 7 NUMBER

MILE POST LOCATION

LGTH (CLEAR) OF SIDING

MAX. GRADE PERCENT
(SUB GRADE)

SLIDE WARNING

E.L. ABOVE SEA LEVEL

FIBER OPTICS

C. T. C. - - -

A. B. S. - - -

SPEED ALLOWANCE

AUTH. SUPER ELEV.

TOTAL ANGLE

ALIGNMENT &
FLANGE LUBRICATORS

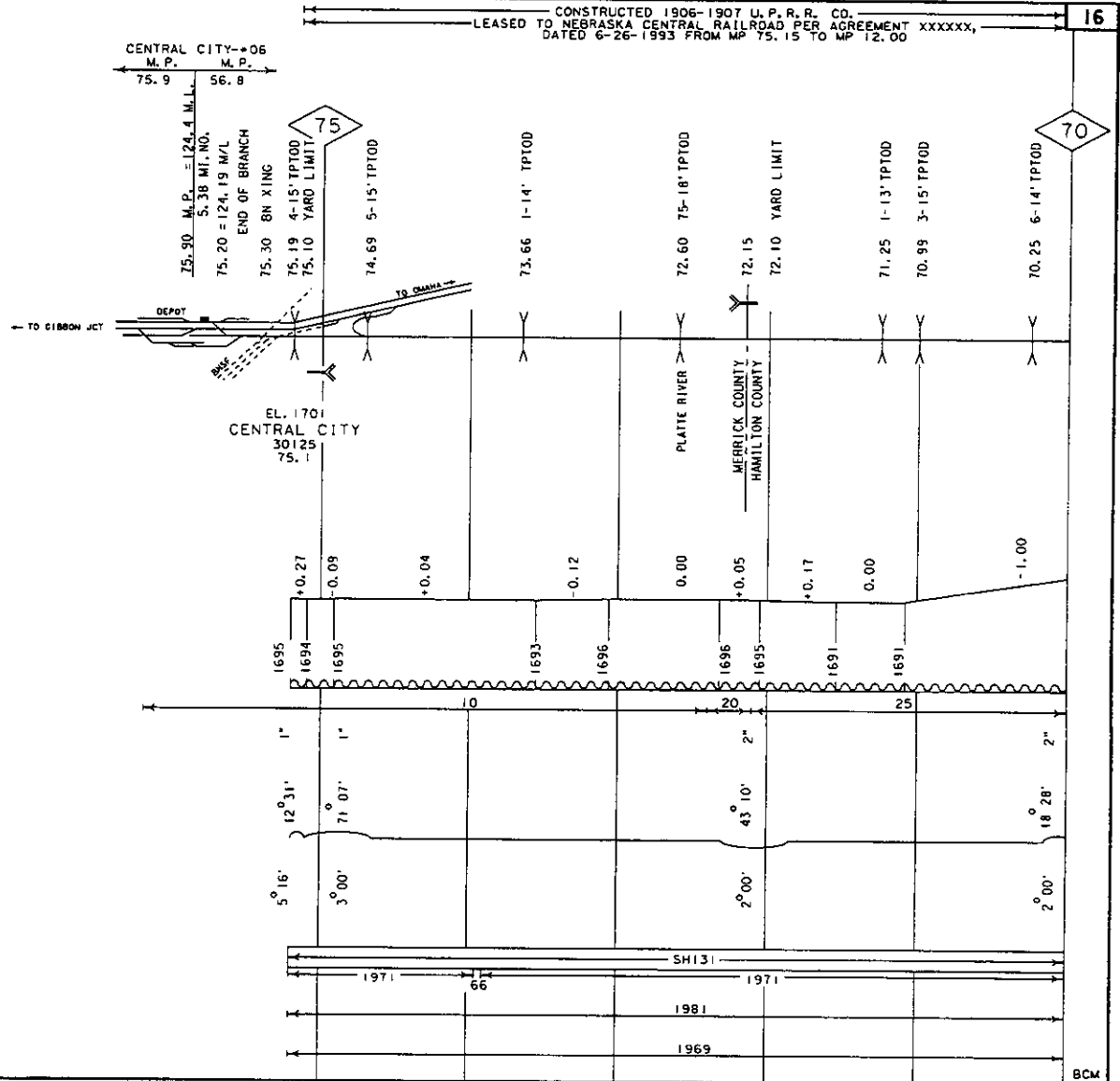
DEGREE OF CURVE

RAIL

SURFACING & LINING

TIE GANG

GRADE XING DATA
X - BUCK
BELL
FLASHER
GATES
W/O WAG
TRAFFIC SIGNAL
STOP SIGN
CANTILEVER



**NEBRASKA CENTRAL RAILROAD
STROMSBURG SUBVISION**

LAST REVISED
JULY 6, 2000

CONSTRUCTED 1906-1907 U. P. R. R. CO.
LEASED TO NEBRASKA CENTRAL RAILROAD PER AGREEMENT XXXXXX, DATED 6-26-1993 FROM MP 75.15 TO MP 12.00

17

MOBILE-TEL. STA.

NAME

RANGE

M. P. M. P.

M. P. LOCATION

70

65

60

YARD LIMIT
DRAG. EDPT. DET.
HOT BOX DET.

PWR. SW. SPC. SW.
INT. SIG. & NO.
ABSOLUTE SIG.
HIGH WIDE
SHIFTED LOAD DET.
TEMP. WIND GAGE
HIGH WATER DET.

TOPOGRAPHY

ELEV. TOP OF RAIL
AT STATION M.P.
CONTROL POINTS &
STATION NAMES
CIRCULAR 7 NUMBER
MILE POST LOCATION
LGTH (CLEAR) OF SIDING

MAX. GRADE PERCENT
(SUB GRADE)

SLIDE WARNING
EL. ABOVE SEA LEVEL
FIBER OPTICS
C. T. C. ---
A. B. S. ---
SPEED ALLOWANCE

AUTH. SUPER ELEV.

TOTAL ANGLE

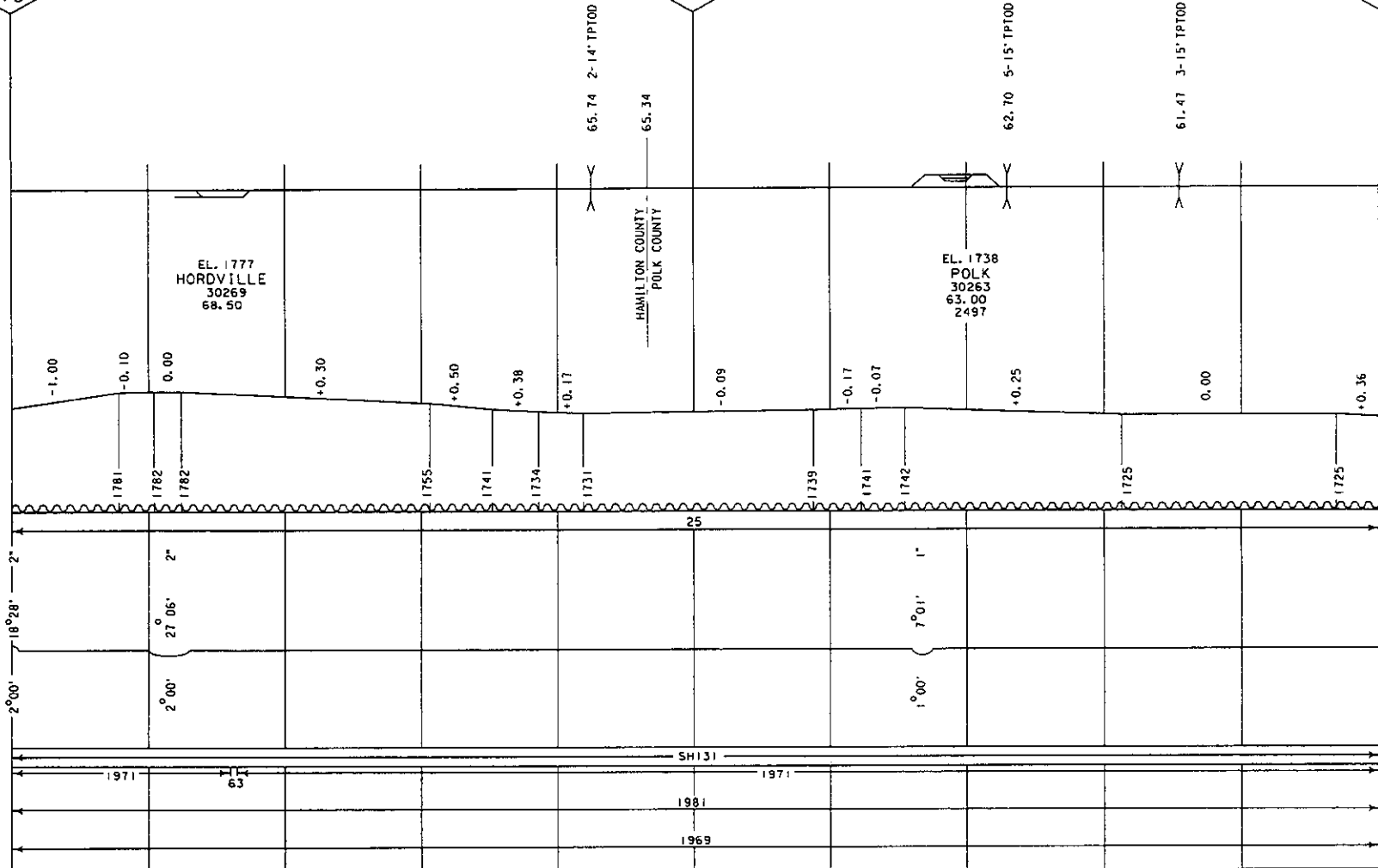
ALIGNMENT &
FLANGE LUBRICATORS

DEGREE OF CURVE

RAIL

SURFACING & LINING

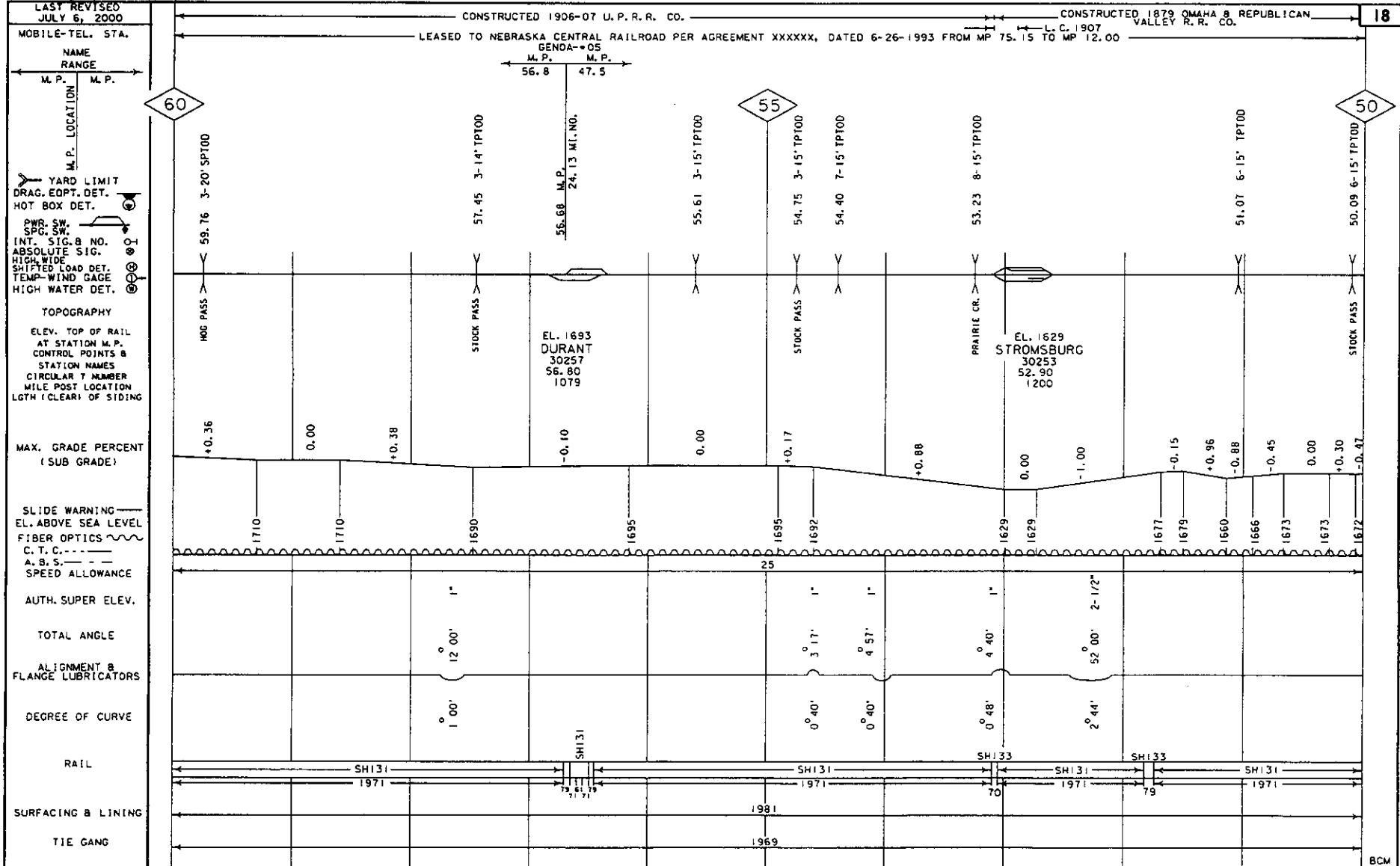
TIE GANG



GRADE XING DATA
BUCK
BELL
FLASHER
GATES
W/O WAG
TRAFFIC SIGNAL
STOP SIGN
CANT LEVER

BCM

**NEBRASKA CENTRAL RAILROAD
STROMSBURG SUBDIVISION**



CONSTRUCTED 1879 OMAHA & REPUBLICAN VALLEY R.R. CO.

19

LEASED TO NEBRASKA CENTRAL RAILROAD PER AGREEMENT XXXXXX, DATED 6-26-1993 FROM MP 75.15 TO MP 12.00

45

40

47.58 4-15' IPTOD
47.28 5-20' SPTOD
46.93 5-15' IPTOD
46.82 4-15' IPTOD

EL. 1631
OSCEOLA
30248
47.50

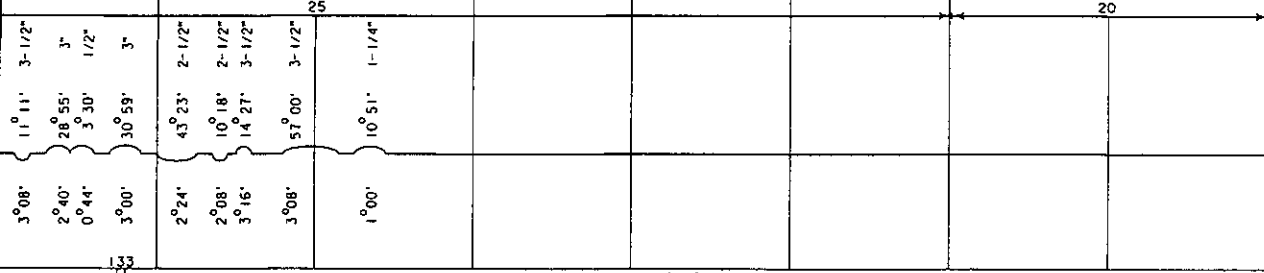
DAVIS CREEK

42.00 YARD LIMIT

EL. 1643
SHELBY
30240
48.10
1507

+0.78
-0.06
+0.20
0.00
-0.84
-0.22
-0.96
-0.53
+0.15
-0.65
+0.94
-0.57
+0.60
+0.24
-0.50
+0.34
+0.29
0.00
+0.29
0.00
-0.70
+0.52
+0.04
+0.13
+0.37

1631
1632
1629
1629
1644
1645
1672
1675
1674
1678
1667
1673
1670
1664
1667
1659
1651
1651
1645
1645
1650
1645
1645
1643
1643



SH 131

1971

1984

1959

BCM

**NEBRASKA CENTRAL RAILROAD
STROMSBURG SUBDIVISION**

LAST REVISED
JULY 6, 2000

MOBILE-TEL. STA.

NAME
RANGE

M. P. M. P.

M. P. LOCATION

50

YARD LIMIT

DRAG. EQPT. DET.

HOT BOX DET.

PWR SW

SPC SW

INT. SIG. B NO.

ABSOLUTE SIG.

HIGH WIDE

SHIFTED LOAD DET.

TEMP-WIND GAGE

HIGH WATER DET.

TOPOGRAPHY

ELEV. TOP OF RAIL

AT STATION M. P.

CONTROL POINTS &

STATION NAMES

(CIRCULAR 7 NUMBER

MILE POST LOCATION

LGTH (CLEAR) OF SIDING

MAX. GRADE PERCENT
(SUB GRADE)

-0.47
0.00
-0.27
+0.31
+0.84
+0.24

SLIDE WARNING

EL. ABOVE SEA LEVEL

FIBER OPTICS

C. T. C.

A. B. S.

SPEED ALLOWANCE

AUTH. SUPER ELEV.

2-1/2"
2-1/2"

TOTAL ANGLE

15° 00'
7° 12'

ALIGNMENT &
FLANGE LUBRICATORS

DEGREE OF CURVE

2° 12'
2° 16'
1° 00'

RAIL

SH 131
1971

SURFACING & LINING

TIE GANG

GRADE XING DATA

X = X-BUCK

B = BELL

F = FLASHER

G = GATES

W = WIP WAG

T = TRAFFIC SIGNAL

S = STOP SIGN

C = CANTILEVER

**NEBRASKA CENTRAL RAILROAD
STROMSBURG SUBDIVISION**

LAST REVISED
JULY 5, 2000

1879

CONSTRUCTED 1978 OMAHA & REPUBLICAN VALLEY R.R. CO.
LEASED TO NEBRASKA CENTRAL RAILROAD PER AGREEMENT XXXXXX, DATED 6-26-1993 FROM MP 75.15 TO MP 12.00

20

MOBILE-TEL. STA.

NAME
RANGE

M. P. M. P.

M. P. LOCATION

40

YARD LIMIT
DRAG. EOPT. DET.
HOT BOX DET.

PWR. SW.
SPG. SW.
INT. SIG. B. NO.
ABSOLUTE SIG.
HIGH WIDE
SHIFTED LOAD DET.
TEMP. WIND GAGE
HIGH WATER DET.

TOPOGRAPHY

ELEV. TOP OF RAIL
AT STATION M.P.
CONTROL POINTS &
STATION NAMES
CIRCULAR 7 NUMBER
MILE POST LOCATION
LGTH (CLEAR) OF SIDING

MAX. GRADE PERCENT
(SUB GRADE)

SLIDE WARNING
EL. ABOVE SEA LEVEL

FIBER OPTICS

C. T. C. ---

A. B. S. ---

SPEED ALLOWANCE

AUTH. SUPER ELEV.

TOTAL ANGLE

ALIGNMENT &
FLANGE LUBRICATORS

DEGREE OF CURVE

RAIL

SURFACING & LINING

TIE GANG

39.21 4-15 TPTOD

YARD LIMIT

38.00

37.09

36.56 8-15 TPTOD

35

POLK COUNTY
BUTLER COUNTY

EL. 1588
RISING CITY
30233
33.30

+0.37 +0.03 -0.38 +0.30 -0.40 0.00 +0.24 +0.80 +0.35 +0.11 0.00 +0.58 0.00 +0.81 -0.94 +0.16 +0.40 -0.61 +0.82 +0.46 +0.04 -0.09 +0.12 0.00 -0.25 +0.35 +0.77 -0.64

1640 1639 1642 1636 1639 1639 1635 1629 1626 1624 1624 1620 1618 1606 1625 1622 1604 1611 1594 1588 1587 1588 1587 1587 1591 1582 1555

20 20 25 25

2-1/2" 2-1/2" 1-1/4" 1-1/4" 1-1/4" 3/4" 1-1/4" 2-1/4" 2" 2" 2" 1-1/2" 1-1/2" 2"

20° 20' 28° 00' 8° 26' 10° 18' 10° 00' 2° 36' 11° 15' 8° 11' 16° 40' 26° 48' 1° 48' 18° 00' 16° 58' 14° 10' 8° 42' 34° 15'

1° 48' 1° 32' 0° 40' 1° 00' 1° 00' 0° 30' 1° 16' 1° 00' 2° 00' 2° 20' 3° 00' 2° 00' 2° 00' 3° 08'

1971 67 1984 1971 1970

GRADE KING DATA
X-BUCK
BELL
FLASHER
GATES
WIG WAG
TRAFFIC SIGNAL
STOP SIGN
CANTILEVER

BCM

**NEBRASKA CENTRAL RAILROAD
STROMSBURG SUBDIVISION**

CONSTRUCTED 1878 OMAHA & REPUBLICAN VALLEY R. R. CO. LEASED TO NEBRASKA CENTRAL RAILROAD PER AGREEMENT XXXXXX, DATED 6-26-1993 FROM MP 75.15 TO MP 12.00

21

LAST REVISED
JULY 6, 2000

MOBILE-TEL. STA.
NAME RANGE
M. P. M. P.

M. P. LOCATION

YARD LIMIT
DRAG. EQPT. DET.
HOT BOX DET.

PWR. SW.
SFG. SW.

INT. SIG. B NO.
ABSOLUTE SIG.
HIGH WIDE
SHIFED LOAD DET.
TEMP-WIND GAGE
HIGH WATER DET.

TOPOGRAPHY
ELEV. TOP OF RAIL
AT STATION M.P.
CONTROL POINTS &
STATION NAMES
CIRCULAR 7 NUMBER
MILE POST LOCATION
LGTH (CLEAR) OF SIDING

MAX. GRADE PERCENT
(SUB GRADE)

SLIDE WARNING
EL. ABOVE SEA LEVEL
FIBER OPTICS
C. T. C.
A. B. S.
SPEED ALLOWANCE

AUTH. SUPER ELEV.

TOTAL ANGLE

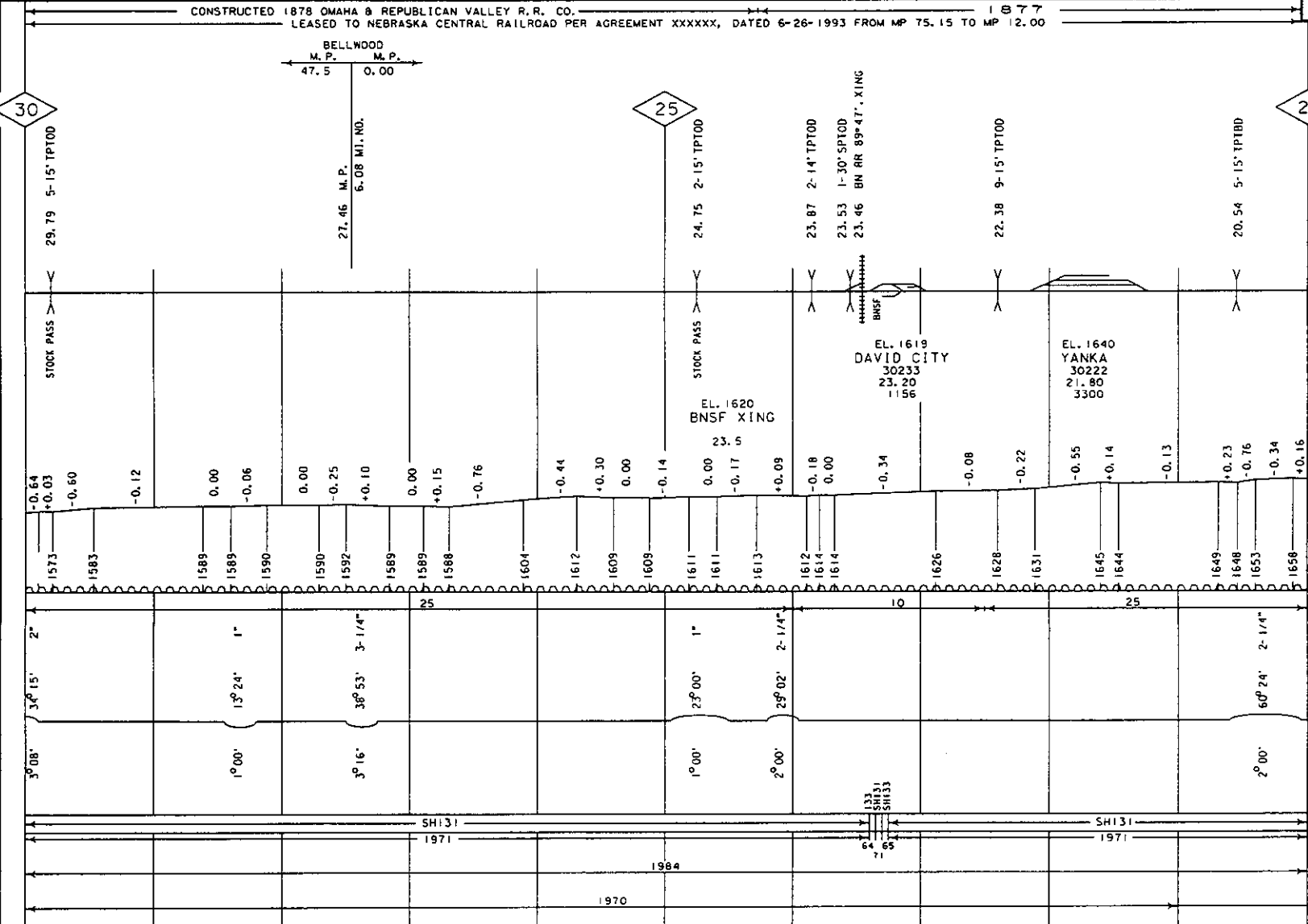
ALIGNMENT &
FLANGE LUBRICATORS

DEGREE OF CURVE

RAIL

SURFACING & LINING

TIE GANG



GRADE XING DATA
X-BUCK
BELL
FLASHER
GATES
WID WAG
TRAFFIC SIGNAL
STOP SIGN
CANTILEVER

BCM

**NEBRASKA CENTRAL RAILROAD
STROMSBURG SUBDIVISION**

LAST REVISED
JULY 6, 2000

MOBILE-TEL. STA.

NAME RANGE

M. P. M. P.

M. P. LOCATION

20

19.84 4' X 40' CIP

YARD LIMIT
DRAG. EQPT. DET.
HOT BOX DET.

PWR. SW.
SPC. SW.

INT. SIG. B NO.
ABSOLUTE SIG.
HIGH WIDE
SHIFTED LOAD DET.
TEMP-WIND GAGE
HIGH WATER DET.

TOPOGRAPHY

ELEV. TOP OF RAIL
AT STATION M.P.
CONTROL POINTS &
STATION NAMES
CIRCULAR 7 NUMBER
MILE POST LOCATION
LGTH (CLEAR) OF SIDING

MAX. GRADE PERCENT
(SUB GRADE)

SLIDE WARNING
EL. ABOVE SEA LEVEL

FIBER OPTICS

C. T. C. ---
A. B. S. ---

SPEED ALLOWANCE

AUTH. SUPER ELEV.

TOTAL ANGLE

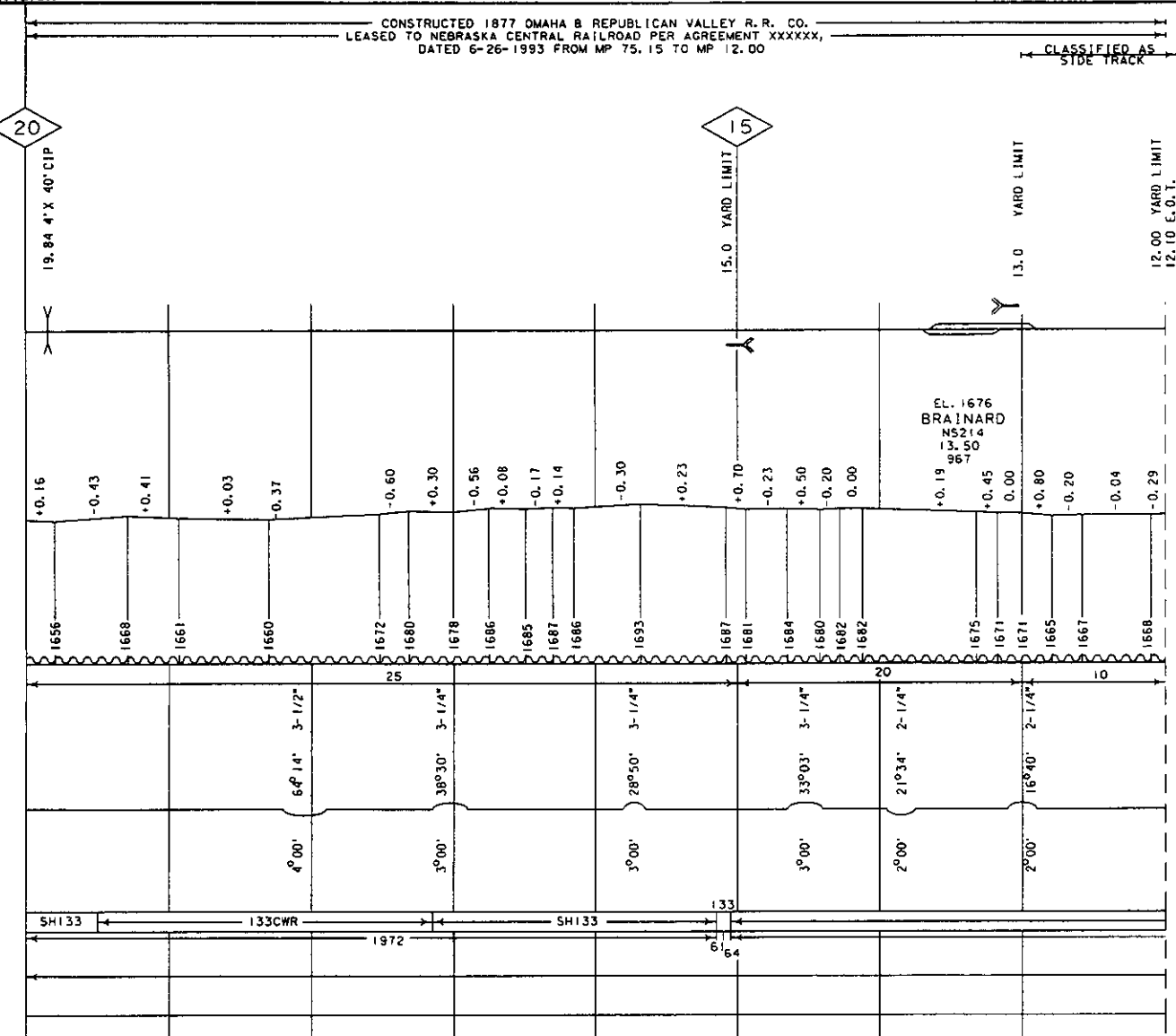
ALIGNMENT &
FLANGE LUBRICATORS

DEGREE OF CURVE

RAIL

SURFACING & LINING

TIE GANG



* ABANDONMENT APPROVED BY ICC
DOC AB33(SUB 81X) EFF 8-19-1993
FROM MP12.00 TO MP-0.11, TRACK
REMOVED

GRADE XING DATA

X = X-BUCK
B = BELL
F = FLASHER
G = GATES
W = W/C WAG
T = TRAFFIC SIGNAL
S = STOP SIGN
C = CANTILEVER

**NEBRASKA CENTRAL RAILROAD
ORD SUBDIVISION**

LAST REVISED
JULY 27, 2000

MOBILE-TEL. STA.

NAME
RANGE

M. P. M. P.

M. P. LOCATION

YARD LIMIT
DRAG. EQPT. DET.
HOT BOX DET.

PWR. SW.
SPG. SW.
INT. SIG. & NO.
ABSOLUTE SIG.
HIGH WIDE
SHIFTED LOAD DET.
TEMP. WIND GAGE
HIGH WATER DET.

TOPOGRAPHY

ELEV. TOP OF RAIL
AT STATION M. P.
CONTROL POINTS &
STATION NAMES
CIRCULAR T NUMBER
MILE POST LOCATION
LGTH (CLEAR) OF SIDING

MAX. GRADE PERCENT
(SUB GRADE)

SLIDE WARNING
EL. ABOVE SEA LEVEL
FIBER OPTICS
C. T. C.
A. B. S.
SPEED ALLOWANCE

AUTH. SUPER ELEV.

TOTAL ANGLE

ALIGNMENT &
FLANGE LUBRICATORS

DEGREE OF CURVE

RAIL

SURFACING & LINING

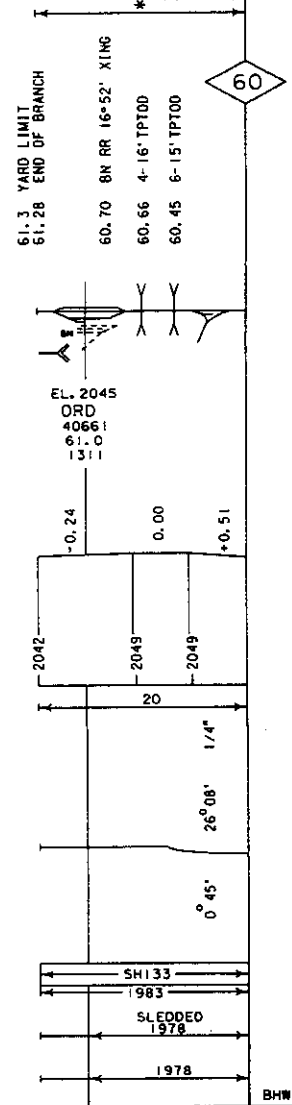
TIE GANG

GRADE XING DATA
X = BUCK
B = BELLY
F = FLASHER
G = GATES
W = WIG WAG
T = TRAFFIC SIGNAL
S = STOP SIGN
C = CANTILEVER

CONST. OMAHA & REP. VALLEY RR CO. 1886

23

* LEASED TO NEBRASKA CENTRAL RAILROAD
PER AGREEMENT XXXXXX, DATED 6-26-1993
FROM MP 61.30 TO MP 0.48



**NEBRASKA CENTRAL RAILROAD
ORD. SUBDIVISION**

LAST REVISED
JULY 27, 2000

CONSTRUCTED 1886 OMAHA & REPUBLICAN VALLEY R.R. CO.
LEASED TO NEBRASKA CENTRAL RAILROAD PER AGREEMENT XXXXXX, DATED 6-26-1993, FROM MP 61.30 TO MP 0.48

24

MOBILE-TEL. STA.

NAME RANGE

M. P. M. P.

M. P. LOCATION

YARD LIMIT
DRAG. EOPT. DET.
HOT BOX DET.

PWR. SW.
SPO. SW.

INT. SIG. B NO.
ABSOLUTE SIG.
HIGH WIDE
SHIFTED LOAD DET.
TEMP. WIND GAGE
HIGH WATER DET.

TOPOGRAPHY
ELEV. TOP OF RAIL
AT STATION M. P.
CONTROL POINTS &
STATION NAMES
CIRCULAR 7 NUMBER
MILE POST LOCATION
LGTH (CLEAR) OF SIDING

MAX. GRADE PERCENT
(SUB GRADE)

SLIDE WARNING
EL. ABOVE SEA LEVEL
FIBER OPTICS

C. T. C. ---
A. B. S. ---
SPEED ALLOWANCE

AUTH. SUPER ELEV.

TOTAL ANGLE

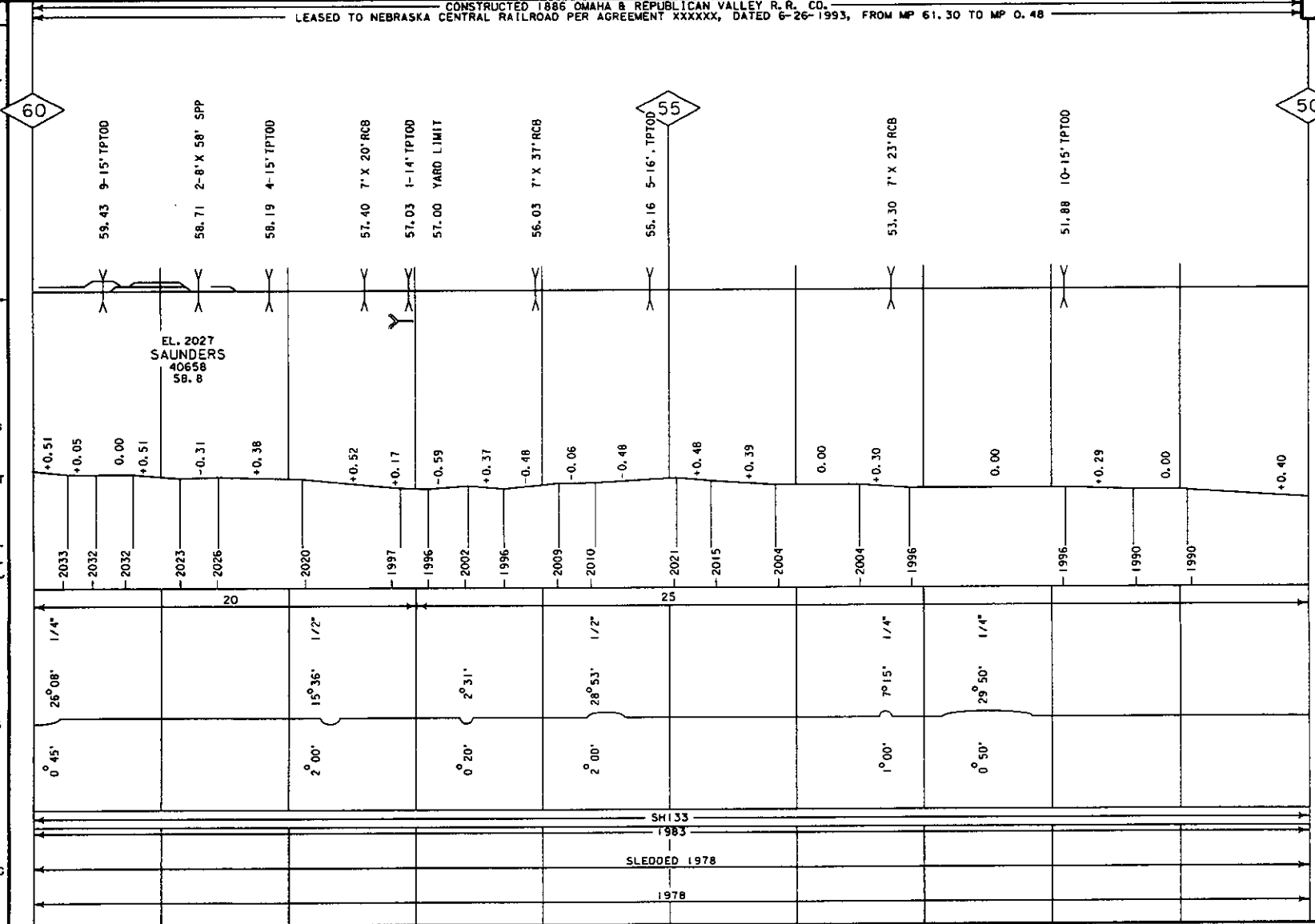
ALIGNMENT &
FLANGE LUBRICATORS

DEGREE OF CURVE

RAIL

SURFACING & LINING

TIE GANG



60

50

50

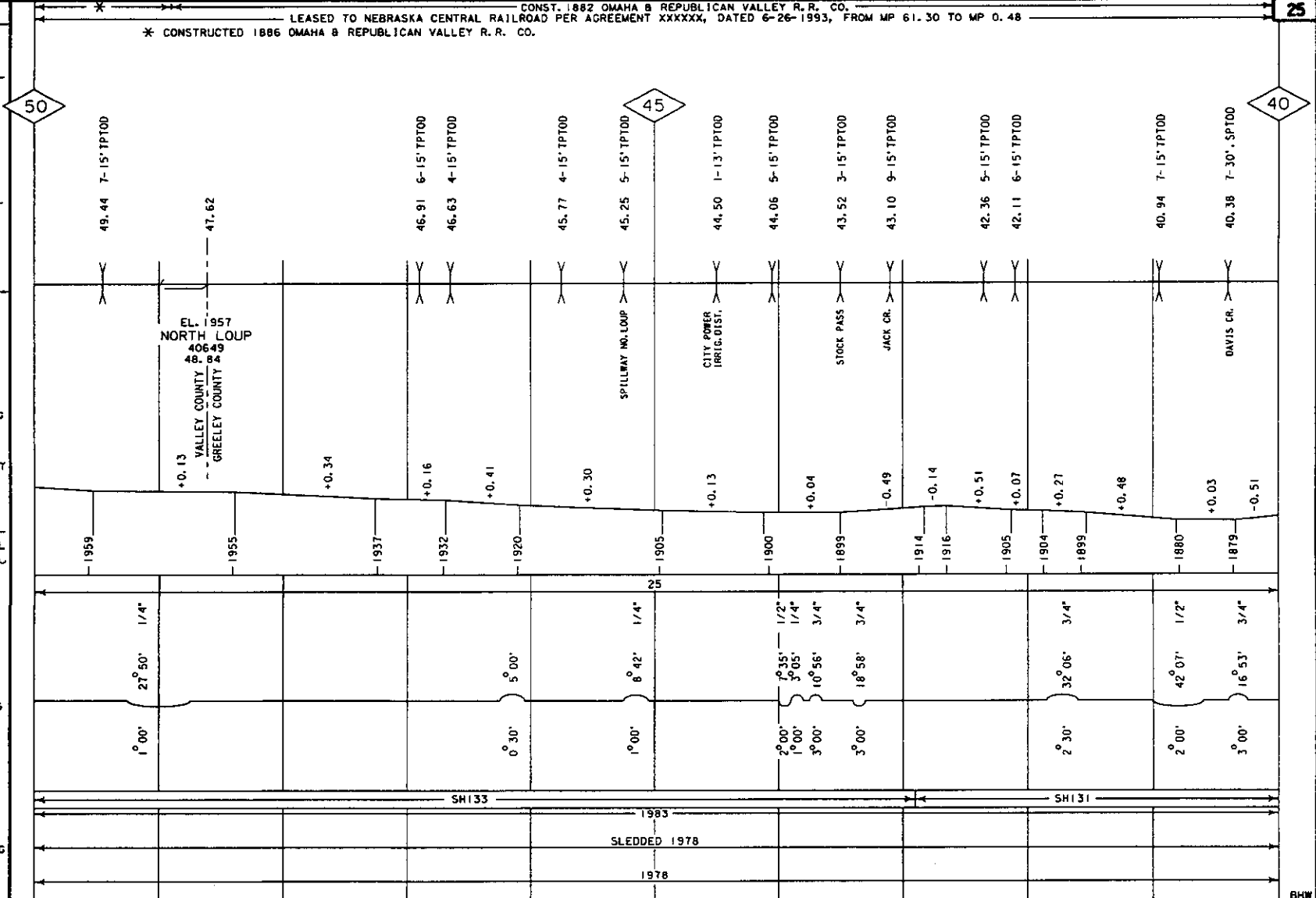
GRADE XING DATA
X = X-BUCK
B = BELL
F = FLASHER
G = GATES

BHW

**NEBRASKA CENTRAL RAILROAD
ORD SUBDIVISION**

MOBILE-TEL. STA. NAME RANGE	M. P.		M. P.	
YARD LIMIT	49.44	7-15' TPT00	47.62	
DRAG. EQPT. DET.				
HOT BOX DET.				
PWR. SW.				
SPG. SW.				
INT. SIG. & NO.				
ABSOLUTE SIG.				
HIGH WIDE				
SHIFTED LOAD DET.				
TEMP-WIND GAGE				
HIGH WATER DET.				
TOPOGRAPHY				
ELEV. TOP OF RAIL AT STATION M.P. CONTROL POINTS & STATION NAMES				
CIRCULAR 7 NUMBER				
MILE POST LOCATION				
LGTH (CLEAR) OF SIDING				
MAX. GRADE PERCENT (SUB GRADE)				
SLIDE WARNING				
E.L. ABOVE SEA LEVEL				
FIBER OPTICS				
C. T. C.				
A. B. S.				
SPEED ALLOWANCE				
AUTH. SUPER ELEV.				
TOTAL ANGLE				
ALIGNMENT & FLANGE LUBRICATORS				
DEGREE OF CURVE				
RAIL				
SURFACING & LINING				
TIE GANG				

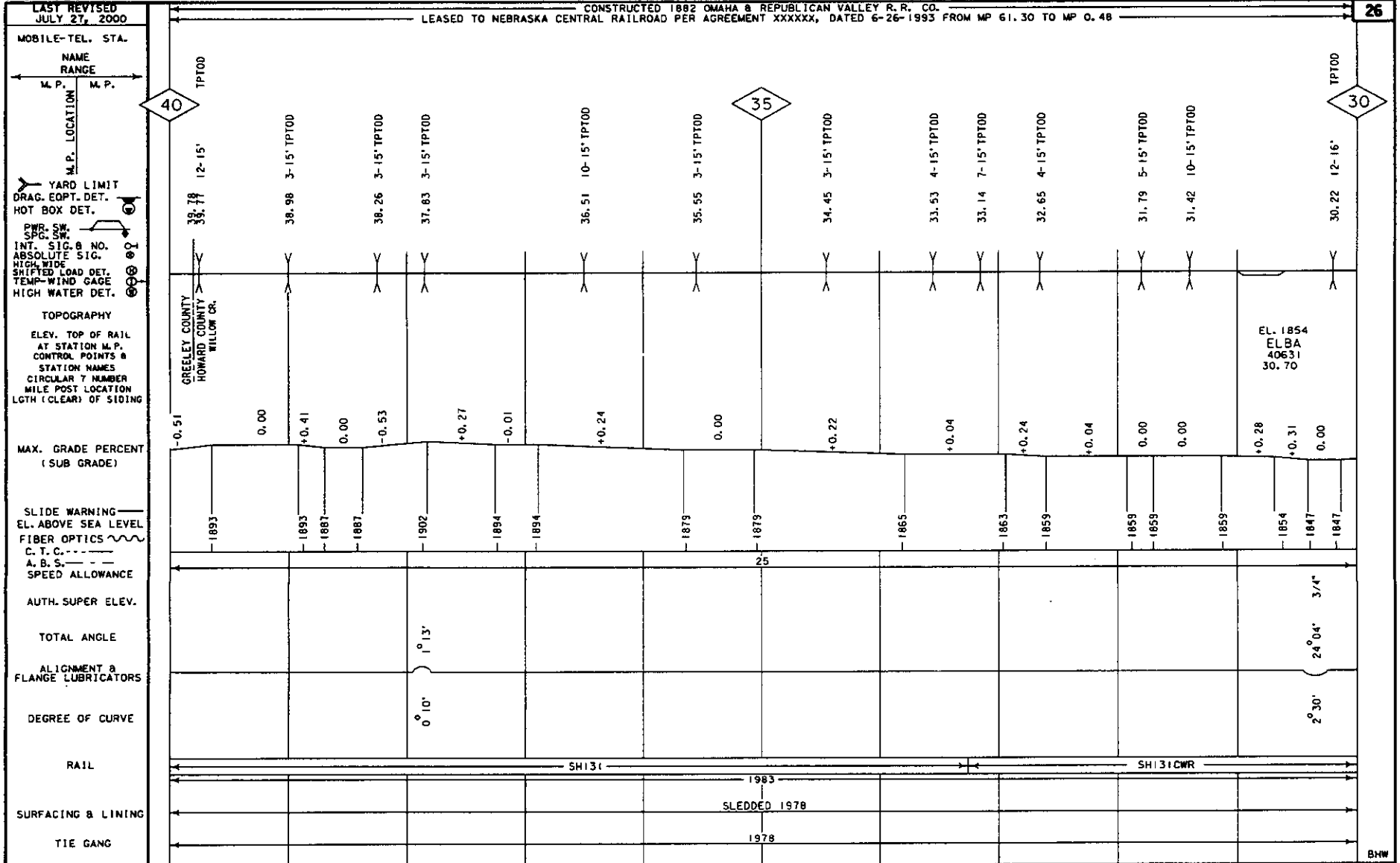
GRADE XING DATA
 X = X-BUCK
 B = BELL
 F = FLASHER
 G = GATES



25

BHW

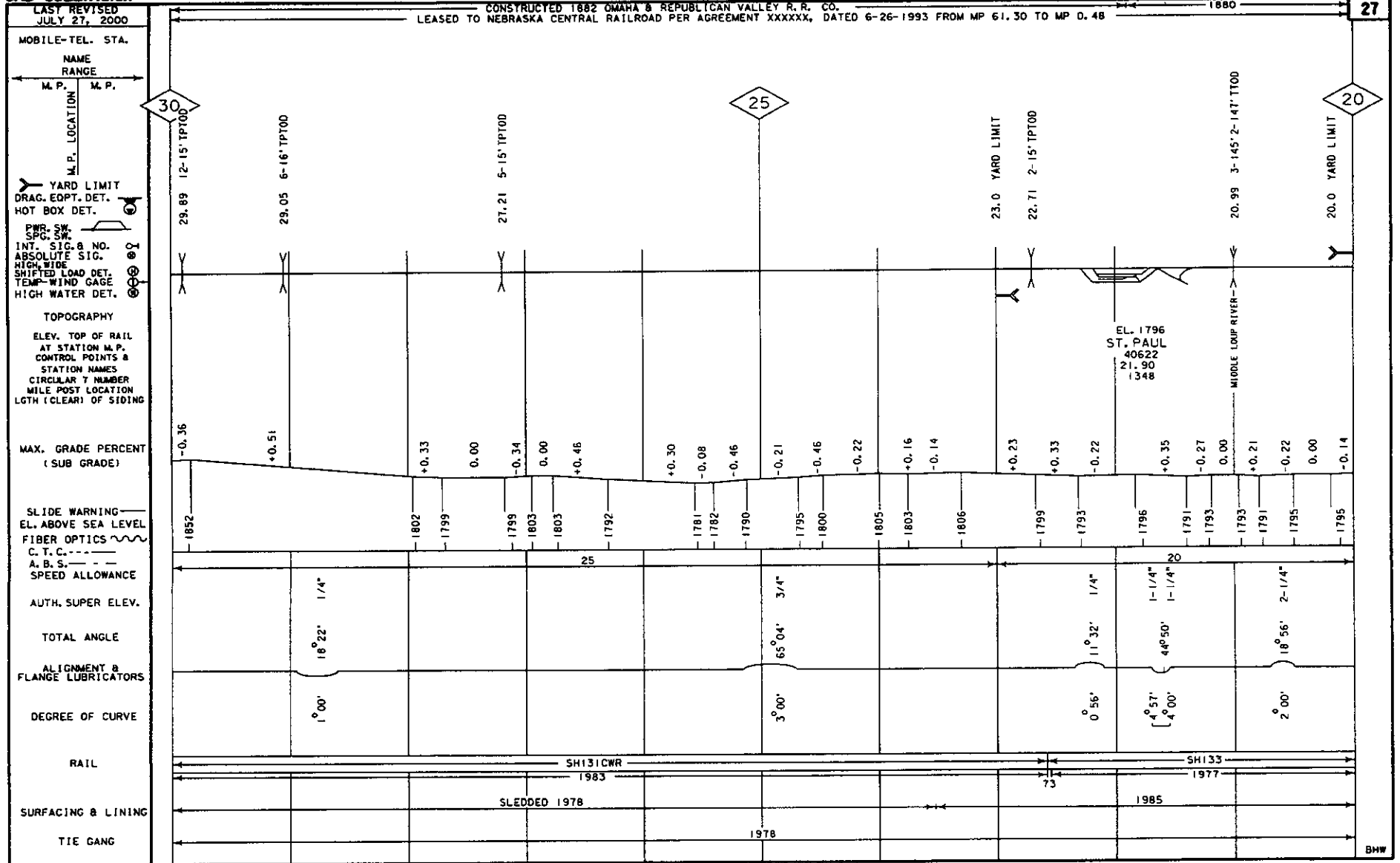
**NEBRASKA CENTRAL RAILROAD
ORD SUBDIVISION**



GRADE KING DATA
X-BUCK
BELL
FLASHER
GATES
WIG WAG
TRAFFIC SIGNAL
STOP SIGN
CANTILEVER

BHW

**NEBRASKA CENTRAL RAILROAD
ORD SUBDIVISION**



GRADE KING DATA

X-BUCK

BELL

FLASHER

GATES

WIG WAG

TRAFFIC SIGNAL

STOP SIGN

CANTILEVER

**NEBRASKA CENTRAL RAILROAD
ORD SUBDIVISION**

LAST REVISED JULY 27, 2000		CONSTRUCTED 1880 OMAHA & REPUBLICAN VALLEY R.R. CO. LEASED TO NEBRASKA CENTRAL RAILROAD PER AGREEMENT XXXXXX, DATED 6-26-1993, FROM MP 61.30 TO MP 0.48		28																						
MOBILE-TEL. STA.																										
NAME RANGE																										
M. P.	M. P.																									
M. P. LOCATION																										
YARD LIMIT																										
DRAG. EOPT. DET.																										
HOT BOX DET.																										
PWR. SW. SPC. SW.																										
INT. SIG. & NO.																										
ABSOLUTE SIG.																										
NICK & WIDE																										
SHIFTED LOAD DET.																										
TEMP. WIND GAGE																										
HIGH WATER DET.																										
TOPOGRAPHY																										
ELEV. TOP OF RAIL																										
AT STATION M. P.																										
CONTROL POINTS &																										
STATION NAMES																										
CIRCULAR 7 NUMBER																										
MILE POST LOCATION																										
LGTH (CLEAR) OF SIDING																										
MAX. GRADE PERCENT (SUB GRADE)																										
SLIDE WARNING																										
EL. ABOVE SEA LEVEL																										
FIBER OPTICS																										
C. T. C.																										
A. B. S.																										
SPEED ALLOWANCE																										
AUTH. SUPER ELEV.																										
TOTAL ANGLE																										
ALIGNMENT & FLANGE LUBRICATORS																										
DEGREE OF CURVE																										
RAIL																										
SURFACING & LINING																										
TIE GANG																										
1797	1802	1872	1874	1880	1875	1874	1873	1880	1876	1878	1878	1874	1875	1875	1872	1872	1874	1872	1872	1876	1866	1866	1864	1862	1864	
-0.14	-0.26	-0.90	-0.33	-0.19	+0.51	+0.03	+0.08	-0.35	+0.30	-0.06	0.00	+0.16	-0.02	0.00	+0.41	+0.03	-0.24	+0.32	0.00	-0.67	+0.63	-0.02	+0.30	+0.10	-0.12	
3° 00'	3° 00'	3° 00'	3° 00'	3° 30'	0° 30'	2° 00'	0° 30'	2° 19'	6° 03'	6° 32'	1° 00'	6° 20'	1° 00'	9° 30'	0° 30'	2° 32'	3° 4"									
3-1/4"	3-1/4"	3-1/4"	3-1/4"	3-3/4"	3/4"	2 1/4"	3/4"	1-1/4"	3/4"	1-1/4"	1-1/4"	1-1/4"	1-1/4"	1-1/4"	1-1/4"	1-1/4"	3/4"									
34° 25'	9° 07'	21° 26'	30° 31.7'	30° 11'	2° 30'	2° 19'	6° 03'	6° 32'	1° 40'	6° 20'	9° 30'	2° 32'	3° 4"													
SHI 33	1976	1985	1976																							

20

15

10

19.59 5-15' IPTOD

10.71 1-14' IPTOD

ST. LIBORF

GRADE KING DATA
X-BUCK
BELT
PLASTER
GATES
WIG WAG
TRAFFIC SIGNAL
STOP SIGN
CANTILEVER

BHW

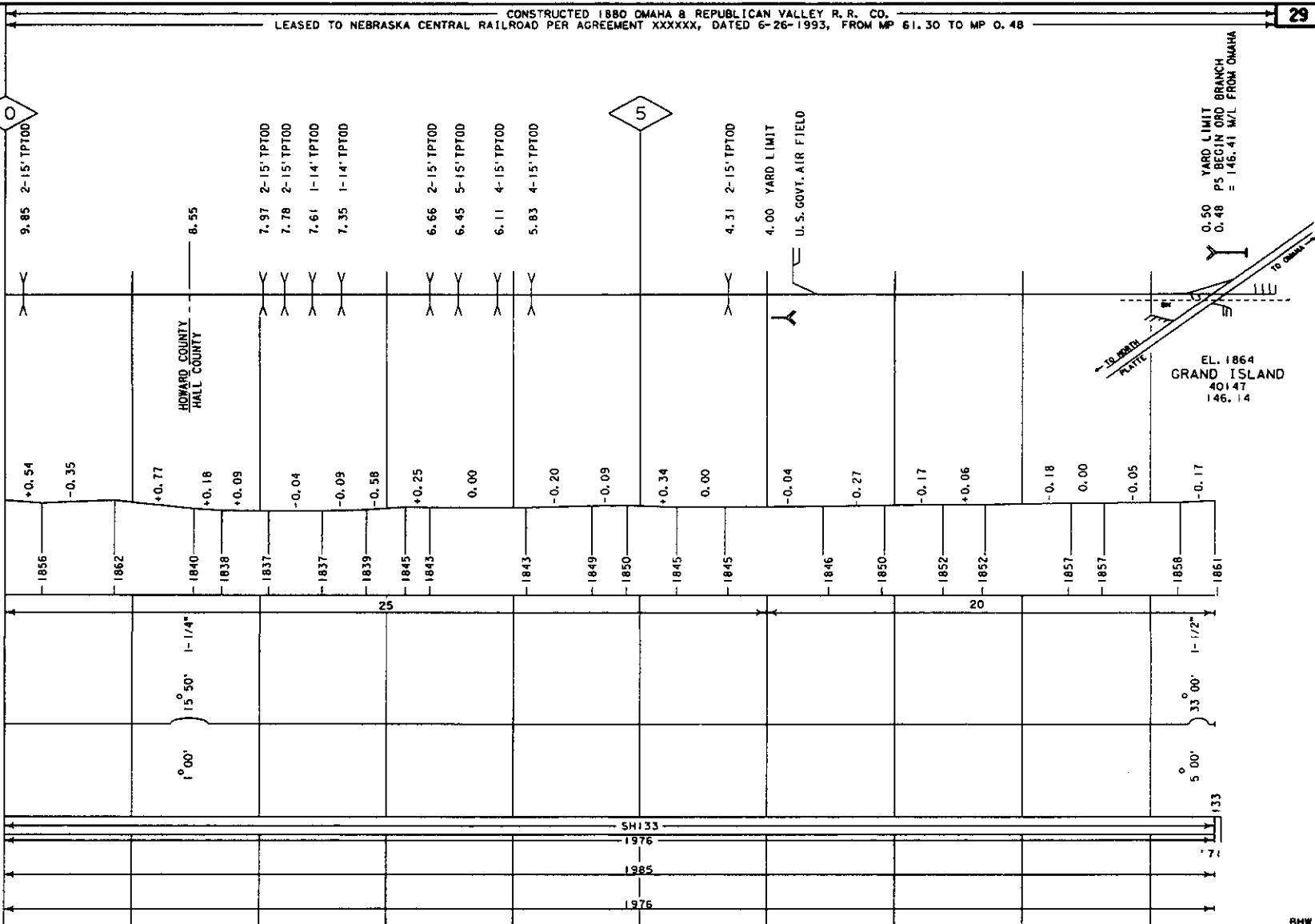
**NEBRASKA CENTRAL RAILROAD
ORD SUBDIVISION**

LAST REVISED
JULY 27, 2000

CONSTRUCTED 1880 OMAHA & REPUBLICAN VALLEY R. R. CO.
LEASED TO NEBRASKA CENTRAL RAILROAD PER AGREEMENT XXXXXX, DATED 6-26-1993, FROM MP 61.30 TO MP 0.48

29

- MOBILE-TEL. STA.
- NAME RANGE
- M. P. M. P.
- M.P. LOCATION
- YARD LIMIT
- DRAG. EQPT. DET.
- HOT BOX DET.
- PWR. SW. SPC. SW.
- INT. SIG. B. NO.
- ABSOLUTE SIG.
- HIGH WIDE
- SHIFTED LOAD DET.
- TEMP. WIND GAGE
- HIGH WATER DET.
- TOPOGRAPHY
- ELEV. TOP OF RAIL AT STATION M.P.
- CONTROL POINTS & STATION NAMES
- CIRCULAR T NUMBER
- MILE POST LOCATION
- LGTH (CLEAR) OF SIDING
- MAX. GRADE PERCENT (SUB GRADE)
- SLIDE WARNING
- EL. ABOVE SEA LEVEL
- FIBER OPTICS
- C. T. C. ---
- A. B. S. ---
- SPEED ALLOWANCE
- AUTH. SUPER ELEV.
- TOTAL ANGLE
- ALIGNMENT & FLANGE LUBRICATORS
- DEGREE OF CURVE
- RAIL
- SURFACING & LINING
- TIE GANG



EL. 1864
GRAND ISLAND
40147
146.14

YARD LIMIT
PS BEGIN ORD BRANCH
= 146.41 M/L FROM OMAHA

U.S. GOVT. AIR FIELD

5

10

HOWARD COUNTY
HALL COUNTY

- GRADE XING DATA
- X-BUCK
- BELL
- FLASHER
- GATES
- WIS WAG
- TRAFFIC SIGNAL
- STOP SIGN
- CANTILEVER

BHW